

MYH11 Rabbit mAb

货号: **AYM29191**

产品信息

反应	Human,Mouse
宿主	Rabbit
克隆性	Monoclonal
预测反应	
应用	WB IHC
推荐浓度	WB: 1:500 - 1:2000 IHC: 1:50 - 1:200
理论分子量	223kDa/224kDa/227kDa/228kDa
实测分子量	250kDa
形式	Liquid
保存条件	Store at -20°C. Avoid freeze / thaw cycles. Buffer: PBS with 0.75% BSA,50% glycerol,pH7.3.
偶联物	Unconjugated
阳性对照	Mouse uterus,Rat stomach
细胞定位	Melanosome
纯化	Affinity purification

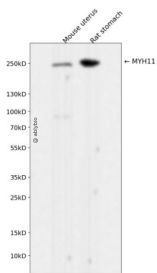
抗原信息

抗原信息	Recombinant fusion protein corresponding to Human MYH11.
序列	ATAKENEKKAKSLEADLMQLQEDLAAAERARKQADLEKEELAEELASSLSGRNALQDEKRRLEARIAQLEEELEEEQGNME AMSDRVRKATQQAEQLSNELATERSTAQKNESARQQLERQNKELRSKLHEMEGAVKSKFKSTIAALEAKIAQLEEQVEQE AREKQAATKSLKQKDKLKEILLQVEDERKMAEQYKEQAEGNARVKQLKRQLEEAEESQRINANRRKLQRELDEATESN EAMGREVNALKSKLRRGNETSFVPSRRSGRRVIENADGSEETDTRDADFNGTKASE

靶点信息

研究背景	The protein encoded by this gene is a smooth muscle myosin belonging to the myosin heavy chain family . The gene product is a subunit of a hexameric protein that consists of two heavy chain subunits and two pairs of non-identical light chain subunits. It functions as a major contractile protein, converting chemical energy into mechanical energy through the hydrolysis of ATP. The gene encoding a human ortholog of rat NUDE1 is transcribed from the reverse strand of this gene, and its 3' end overlaps with that of the latter. The pericentric inversion of chromosome 16 [inv(16)(p13q22)] produces a chimeric transcript that encodes a protein consisting of the first 165 residues from the N terminus of core-binding factor beta in a fusion with the C-terminal portion of the smooth muscle myosin heavy chain. This chromosomal rearrangement is associated with acute myeloid leukemia of the M4Eo subtype. Alternative splicing generates isoforms that are differentially expressed, with ratios changing during muscle cell maturation. Alternatively spliced transcript variants encoding different isoforms have been identified.
基因ID	4629
基因名	MYH11
Swiss	P35749
别名	MYH11;AAT4;FAA4;SMHC;SMMHC;myosin-11

产品验证



Western blot analysis of MYH11 expressed in Mouse uterus, Rat stomach using MYH11 Rabbit mAb at 1:1000. Secondary antibody: HRP Goat Anti-Rabbit IgG (H+L) at 1:5000. Lysates/proteins: 30ug per lane. Blocking buffer: 5% non-fat dry milk in TBST. Detection: ECL Enhanced Kit. Exposure time: 120s.

实验步骤

访问官网浏览详情: www.ablybio.cn