

GTF2I Rabbit mAb

货号: **AYM29188**

产品信息

反应	Human,Mouse,Rat
宿主	Rabbit
克隆性	Monoclonal
预测反应	
应用	WB IHC IF/ICC
推荐浓度	WB: 1:500 - 1:2000 IHC: 1:50 - 1:200 IF/ICC: 1:50 - 1:200
理论分子量	30kDa/107kDa/110kDa/112kDa
实测分子量	135kDa
形式	Liquid
保存条件	Store at -20°C. Avoid freeze / thaw cycles. Buffer: PBS with 0.75% BSA,50% glycerol,pH7.3.
偶联物	Unconjugated
阳性对照	HeLa,SKOV3,Raji,HT-29,MCF7
细胞定位	Cytoplasm,Nucleus
纯化	Affinity purification

抗原信息

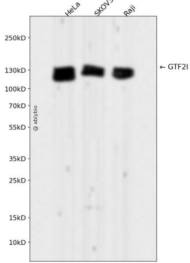
抗原信息	Recombinant fusion protein corresponding to Human GTF2I.
序列	TWFGIPRLERIVRGSNKIKFVVKKPELVISYLPFGMASKINTKALQSPKRPRSPGNSKVPVEIEVTVEGPNNNNPQTSAVRTP TQTNGSNVPFKPRGREFSFEAWNAKITDLKQKVENLNFNEKCGEALGLKQAVKVPFALFESFPEDFYVEGLPEGVPPFRRPST FGIPRLEKILRNKAKIKFIIKKPEMFETAIKESTSSKSPPRKINSSP

靶点信息

研究背景	This gene encodes a phosphoprotein containing six characteristic repeat motifs. The encoded protein binds to the initiator element (Inr) and E-box element in promoters and functions as a regulator of transcription. This locus, along with several other neighboring genes, is deleted in Williams-Beuren syndrome. There are many closely related genes and pseudogenes for this gene on chromosome 7. This gene also has pseudogenes on chromosomes 9, 13, and 21. Alternatively spliced transcript variants encoding multiple isoforms have been observed.
------	--

基因ID	2969
基因名	GTF2I
Swiss	P78347
别名	GTF2I;BAP135;BTKAP1;DIWS;GTFII-I;IB291;SPIN;TFII-I;WBS;WBSCR6

产品验证



Western blot analysis of GTF2I expressed in HeLa,SKOV3,Raji using GTF2I Rabbit mAb at 1:1000. Secondary antibody: HRP Goat Anti-Rabbit IgG (H+L) at 1:5000. Lysates/proteins: 30ug per lane. Blocking buffer: 5% non-fat dry milk in TBST. Detection: ECL Enhanced Kit. Exposure time: 120s.

实验步骤

访问官网浏览详情: www.ablybio.cn