

IL15RA Rabbit mAb

货号: **AYM29187**

产品信息

反应	Human
宿主	Rabbit
克隆性	Monoclonal
预测反应	
应用	WB IF/ICC
推荐浓度	WB: 1:500 - 1:2000 IF/ICC: 1:50 - 1:200
理论分子量	15-28kDa
实测分子量	38kDa
形式	Liquid
保存条件	Store at -20°C. Avoid freeze / thaw cycles. Buffer: PBS with 0.75% BSA,50% glycerol,pH7.3.
偶联物	Unconjugated
阳性对照	THP-1
细胞定位	Cytoplasmic vesicle membrane,Endoplasmic reticulum membrane,Golgi apparatus membrane,Membrane ,Nucleus membrane,Secreted,Single-pass type I membrane protein,Single-pass type I membrane protein, extracellular space
纯化	Affinity purification

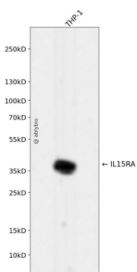
抗原信息

抗原信息	Recombinant fusion protein corresponding to Human IL15RA.
序列	ITCPPPMSVEHADIWVKSYSLYSRERYICNSGFKRKAGTSSLTECVLNKATNVVAHWTTPSLKCIRDPALVHQRAPPSTVTT AGVTPQPESLSPSGKEPAASSPSSNNTAATTAIVPGSQLMPSKSPSTGTTEISSHESHGTPSQTTAKNWELTASASHQP PGVYPQGHSDTT

靶点信息

研究背景	This gene encodes a cytokine receptor that specifically binds interleukin 15 (IL15) with high affinity. The receptors of IL15 and IL2 share two subunits, IL2R beta and IL2R gamma. This forms the basis of many overlapping biological activities of IL15 and IL2. The protein encoded by this gene is structurally related to IL2R alpha, an additional IL2-specific alpha subunit necessary for high affinity IL2 binding. Unlike IL2RA, IL15RA is capable of binding IL15 with high affinity independent of other subunits, which suggests distinct roles between IL15 and IL2. This receptor is reported to enhance cell proliferation and expression of apoptosis inhibitor BCL2L1/BCL2-XL and BCL2. Multiple alternatively spliced transcript variants of this gene have been reported.
基因ID	3601
基因名	IL15RA
Swiss	Q13261
别名	IL15RA;CD215

产品验证



Western blot analysis of IL15RA expressed in THP-1 using IL15RA Rabbit mAb at 1:1000. Secondary antibody: HRP Goat Anti-Rabbit IgG (H+L) at 1:5000. Lysates/proteins: 30ug per lane. Blocking buffer: 5% non-fat dry milk in TBST. Detection: ECL Enhanced Kit. Exposure time: 120s.

实验步骤

访问官网浏览详情: www.ablybio.cn