

SCARB1 Rabbit mAb

货号: **AYM29180**

产品信息

反应	Human,Mouse,Rat
宿主	Rabbit
克隆性	Monoclonal
预测反应	
应用	WB IHC
推荐浓度	WB: 1:500 - 1:2000 IHC: 1:50 - 1:200
理论分子量	80kDa
实测分子量	80kDa
形式	Liquid
保存条件	Store at -20°C. Avoid freeze / thaw cycles. Buffer: PBS with 0.75% BSA,50% glycerol,pH7.3.
偶联物	Unconjugated
阳性对照	293T,HepG2,Mouse liver,Mouse ovary,Rat liver,Rat ovary
细胞定位	Cell membrane,Membrane,Multi-pass membrane protein,caveola
纯化	Affinity purification

抗原信息

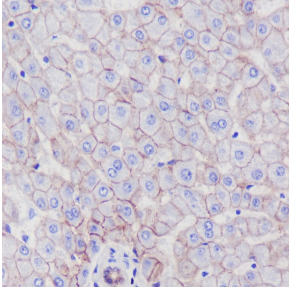
抗原信息	Recombinant fusion protein corresponding to Human SCARB1.
序列	MGCSAKARWAAGALGVAGLLCAVLGAVMIVMVP SLIKQV LKNVRIDPSSLSFNMWKEIPIPFYLSVYFFDVMNPSEILKG EKPQVRERGPYVYREFRHK

靶点信息

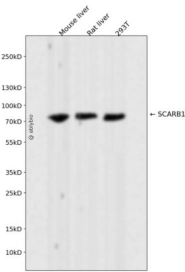
研究背景	The protein encoded by this gene is a plasma membrane receptor for high density lipoprotein cholesterol (HDL). The encoded protein mediates cholesterol transfer to and from HDL. In addition, this protein is a receptor for hepatitis C virus glycoprotein E2. Two transcript variants encoding different isoforms have been found for this gene.[provided by RefSeq, Mar 2011]
基因ID	949

基因名	SCARB1
Swiss	Q8WTV0
别名	CD36L1; CLA-1; CLA1; HDLQTL6; SR-BI; SRB1

产品验证



Immunohistochemical analysis of paraffin-embedded human liver, using SCARB1 Antibody.



Western blot analysis of SCARB1 expressed in Mouse liver, Rat liver, 293T using SCARB1 Rabbit mAb at 1:1000. Secondary antibody: HRP Goat Anti-Rabbit IgG (H+L) at 1:5000. Lysates/proteins: 30ug per lane. Blocking buffer: 5% non-fat dry milk in TBST. Detection: ECL Enhanced Kit. Exposure time: 120s.

实验步骤

访问官网浏览详情: www.ablybio.cn