

Laminin beta 1 Rabbit mAb

货号: **AYM29169**

产品信息

反应	Human,Mouse,Rat
宿主	Rabbit
克隆性	Monoclonal
预测反应	
应用	WB FC
推荐浓度	WB: 1:500 - 1:2000 FC: 1:20 - 1:50
理论分子量	198kDa
实测分子量	198kDa
形式	Liquid
保存条件	Store at -20°C. Avoid freeze / thaw cycles. Buffer: PBS with 0.75% BSA,50% glycerol,pH7.3.
偶联物	Unconjugated
阳性对照	HeLa
细胞定位	Secreted,basement membrane,extracellular matrix,extracellular space
纯化	Affinity purification

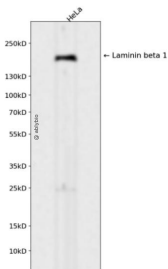
抗原信息

抗原信息	Recombinant fusion protein corresponding to Human Laminin beta 1.
序列	EAKLRADAEAKQSAEDILLKTNATKEKMDKSNEELRNLIKQIRNFLTQDSADLDSIEAVANEVLKMEMPSTPQQLQNLTEDIR ERVESLSQVEVILQHSAAADIARAEMLLEEAKRASKSATDVKVTADMVKEALEEAEKAQVAAEKAQADEDIQGTQNLTSI ESETAASEETLFNASQRISSELERNVEELKRKAAQNSGEAEYIEKVYTVKQSAEDVKKTLDGELDEKYKVENLIAKKTEESA DARRKAEMLQNEAKTLLAQANSKLQLLDLERKYEDNQRYLEDKAQELARLEGEVRSLLKDISQKVAVYSTCL

靶点信息

研究背景	Laminins, a family of extracellular matrix glycoproteins, are the major noncollagenous constituent of basement membranes. They have been implicated in a wide variety of biological processes including cell adhesion, differentiation, migration, signaling, neurite outgrowth and metastasis. Laminins are composed of 3 non identical chains: laminin alpha, beta and gamma and they form a cruciform structure consisting of 3 short arms, each formed by a different chain, and a long arm composed of all 3 chains. Different alpha, beta and gamma chain isomers combine to give rise to different heterotrimeric laminin isoforms which are designated by Arabic numerals in the order of their discovery, i.e. alpha1beta1gamma1 heterotrimer is laminin 1. This gene encodes the beta chain isoform laminin, beta 1. The beta 1 chain has 7 structurally distinct domains which it shares with other beta chain isomers. The C-terminal helical region containing domains I and II are separated by domain alpha, domains III and V contain several EGF-like repeats, and domains IV and VI have a globular conformation. Laminin, beta 1 is expressed in most tissues that produce basement membranes, and is one of the 3 chains constituting laminin 1, the first laminin isolated from Engelbreth-Holm-Swarm (EHS) tumor. A sequence in the beta 1 chain that is involved in cell attachment, chemotaxis, and binding to the laminin receptor was identified and shown to have the capacity to inhibit metastasis.
基因ID	3912
基因名	LAMB1
Swiss	P07942
别名	LAMB1;CLM;LIS5

产品验证



Western blot analysis of Laminin beta 1 expressed in HeLa using Laminin beta 1 Rabbit mAb at 1:1000. Secondary antibody: HRP Goat Anti-Rabbit IgG (H+L) at 1:5000. Lysates/proteins: 30ug per lane. Blocking buffer: 5% non-fat dry milk in TBST. Detection: ECL Enhanced Kit. Exposure time: 120s.

实验步骤

访问官网浏览详情: www.ablybio.cn