

# MAD2L1 binding protein Rabbit mAb

货号: **AYM29154**

## 产品信息

反应	Human,Mouse,Rat
宿主	Rabbit
克隆性	Monoclonal
预测反应	
应用	WB IHC IF/ICC
推荐浓度	<b>WB:</b> 1:500 - 1:2000 <b>IHC:</b> 1:50 - 1:200 <b>IF/ICC:</b> 1:50 - 1:200
理论分子量	34kDa
实测分子量	34kDa
形式	Liquid
保存条件	Store at -20°C. Avoid freeze / thaw cycles. Buffer: PBS with 0.75% BSA,50% glycerol,pH7.3.
偶联物	Unconjugated
阳性对照	HeLa,HepG2
细胞定位	cytoplasm,nuclear membrane,nucleolus,nucleoplasm,nucleus,spindle
纯化	Affinity purification

## 抗原信息

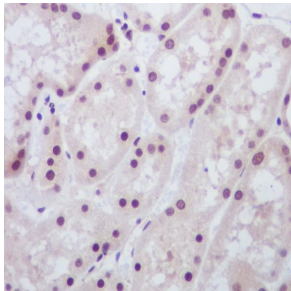
抗原信息	Recombinant fusion protein corresponding to Human MAD2L1 binding protein.
序列	YSVDQSLSTAACLRRRLFRAIFMADAFSELQAPPLMGTVVMAQGHRNCGEDWFRPKLNRYVPSRGHKLTVTLSGGRPSIRT TAWEDYIWFQAPVTFKGFRE

## 靶点信息

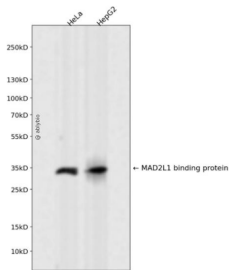
研究背景	The protein encoded by this gene was identified as a binding protein of the MAD2 mitotic arrest deficient-like 1 (MAD2/MAD2L1). MAD2 is a key component of the spindle checkpoint that delays the onset of anaphase until all the kinetochores are attached to the spindle. This protein may interact with the spindle checkpoint and coordinate cell cycle events in late mitosis. Alternatively spliced transcript variants encoding distinct isoforms have been observed. [provided by RefSeq, Jul 2008]
------	---

基因ID	9587
基因名	MAD2L1BP
Swiss	Q15013
别名	CMT2

## 产品验证



Immunohistochemical analysis of paraffin-embedded human kidney, using MAD2L1BP Antibody



Western blot analysis of MAD2L1 binding protein expressed in HeLa, HepG2 using MAD2L1 binding protein Rabbit mAb at 1:1000. Secondary antibody: HRP Goat Anti-Rabbit IgG (H+L) at 1:5000. Lysates/proteins: 30ug per lane. Blocking buffer: 5% non-fat dry milk in TBST. Detection: ECL Enhanced Kit. Exposure time: 120s.

## 实验步骤

访问官网浏览详情: [www.ablybio.cn](http://www.ablybio.cn)