

FGFR2 Rabbit mAb

货号: **AYM29148**

产品信息

反应	Human,Mouse,Rat
宿主	Rabbit
克隆性	Monoclonal
预测反应	
应用	WB IP
推荐浓度	WB: 1:500 - 1:2000 IP: 1:20 - 1:50
理论分子量	28kDa/40kDa/76-92kDa
实测分子量	145kDa
形式	Liquid
保存条件	Store at -20°C. Avoid freeze / thaw cycles. Buffer: PBS with 0.75% BSA,50% glycerol,pH7.3.
偶联物	Unconjugated
阳性对照	293T,LO2
细胞定位	Cell membrane,Cytoplasmic vesicle,Golgi apparatus,Secreted,Single-pass type I membrane protein
纯化	Affinity purification

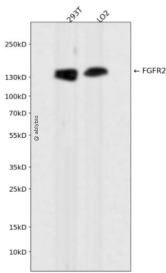
抗原信息

抗原信息	Recombinant fusion protein corresponding to Human FGFR2.
序列	MVSWGRFICLVVVTMATLSLARPSFSLVEDTTLEPEEPPTYQISQPEVYVAAPGESLEVRCLLKDAAVISWTKDGVHLGPN NRTVLIGEYLQIKGATPR

靶点信息

研究背景	The protein encoded by this gene is a member of the fibroblast growth factor receptor family, where amino acid sequence is highly conserved between members and throughout evolution. FGFR family members differ from one another in their ligand affinities and tissue distribution. A full-length representative protein consists of an extracellular region, composed of three immunoglobulin-like domains, a single hydrophobic membrane-spanning segment and a cytoplasmic tyrosine kinase domain. The extracellular portion of the protein interacts with fibroblast growth factors, setting in motion a cascade of downstream signals, ultimately influencing mitogenesis and differentiation. This particular family member is a high-affinity receptor for acidic, basic and/or keratinocyte growth factor, depending on the isoform. Mutations in this gene are associated with Crouzon syndrome, Pfeiffer syndrome, Craniosynostosis, Apert syndrome, Jackson-Weiss syndrome, Beare-Stevenson cutis gyrata syndrome, Saethre-Chotzen syndrome, and syndromic craniosynostosis. Multiple alternatively spliced transcript variants encoding different isoforms have been noted for this gene.
基因ID	2263
基因名	FGFR2
Swiss	P21802
别名	BBDS;BEK;BFR-1;CD332;CEK3;CFD1;ECT1;JWS;K-SAM;KGFR;TK14;TK25;FGFR2

产品验证



Western blot analysis of FGFR2 expressed in 293T, LO2 using FGFR2 Rabbit mAb at 1:1000. Secondary antibody: HRP Goat Anti-Rabbit IgG (H+L) at 1:5000. Lysates/proteins: 30ug per lane. Blocking buffer: 5% non-fat dry milk in TBST. Detection: ECL Enhanced Kit. Exposure time: 120s.

实验步骤

访问官网浏览详情: www.ablybio.cn