

ENDOGL1 / ENGL Rabbit mAb

货号: **AYM29144**

产品信息

反应	Human
宿主	Rabbit
克隆性	Monoclonal
预测反应	
应用	WB IP
推荐浓度	WB: 1:500 - 1:2000 IP: 1:20 - 1:50
理论分子量	16kDa/26kDa/35kDa/41kDa
实测分子量	41kDa
形式	Liquid
保存条件	Store at -20°C. Avoid freeze / thaw cycles. Buffer: PBS with 0.75% BSA,50% glycerol,pH7.3.
偶联物	Unconjugated
阳性对照	HL-60,HUVEC,MCF7
细胞定位	Mitochondrion inner membrane
纯化	Affinity purification

抗原信息

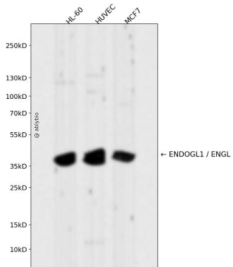
抗原信息	Recombinant fusion protein corresponding to Human ENDOGL1 / ENGL.
序列	LQDLEKLSGLVFFPHLDRTSDIRNICSVDTCCLLDFQEFTLYLSTRKIEGARSVLRLEKIMENLNKNAEIEPDDYFMSRYEKKLE ELKAKEQSGTQIRKPS

靶点信息

研究背景	This gene encodes an endo/exonuclease with 5'-3' exonuclease activity. The encoded enzyme catalyzes the hydrolysis of ester linkages at the 5' end of a nucleic acid chain. This enzyme is localized to the mitochondria and may play a role in programmed cell death. Alternatively spliced transcript variants have been described. A pseudogene exists on chromosome 18.
基因ID	9941

基因名	EXOG
Swiss	Q9Y2C4
别名	EXOG;ENDOGL1;ENDOGL2;ENGL;ENGL-a;ENGL-b;ENGLA;ENGLB

产品验证



Western blot analysis of ENDOGL1 / ENGL expressed in HL-60, HUVEC, MCF7 using ENDOGL1 / ENGL Rabbit mAb at 1:1000. Secondary antibody: HRP Goat Anti-Rabbit IgG (H+L) at 1:5000. Lysates/proteins: 30ug per lane. Blocking buffer: 5% non-fat dry milk in TBST. Detection: ECL Enhanced Kit. Exposure time: 120s.

实验步骤

访问官网浏览详情: www.ablybio.cn