

Met (c-Met) Rabbit mAb

货号: **AYM29142**

产品信息

反应	Human,Mouse,Rat
宿主	Rabbit
克隆性	Monoclonal
预测反应	
应用	WB IHC IF/ICC FC
推荐浓度	WB: 1:500 - 1:2000 IHC: 1:50 - 1:200 IF/ICC: 1:50 - 1:200 FC: 1:20 - 1:50
理论分子量	85kDa/155kDa/157kDa
实测分子量	155kDa
形式	Liquid
保存条件	Store at -20°C. Avoid freeze / thaw cycles. Buffer: PBS with 0.75% BSA,50% glycerol,pH7.3.
偶联物	Unconjugated
阳性对照	Rat kidney
细胞定位	Membrane,Secreted,Single-pass type I membrane protein
纯化	Affinity purification

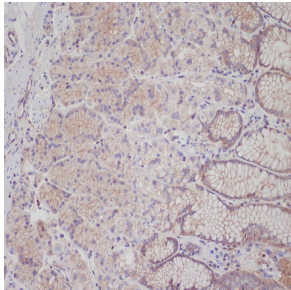
抗原信息

抗原信息	Recombinant fusion protein corresponding to Human Met (c-Met) .
序列	LGCRHFQSCSQCLSAPPFVQCGWCHDKCVRSEECLSGTWTQIQICLPAIYKVPNSAPLEGGTRLTICGWDFGFRNNKF DLKKTRVLLGNESCTLLSESTMNTLKCTVGPAMNKHFNMSIIISNGHGTTQYSTFSYVDPVITSISPKYGPMAGGTLTLLT GNYLNSGNSRHISIGGKTCTLKSVSNSILECYTPAQTISTEFAVKLKIDLANRETSIFSYPREDPIVYIEIHPTKSFISGGSTITGVG KNLNSVSVPRMVINVHEAGRNFVACQHRNSNIEICCTPSLQQLNLQLPLKTKAFFMLDGILSKYFDLIYVHNPV

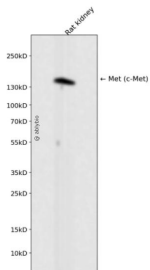
靶点信息

研究背景	This gene encodes a member of the receptor tyrosine kinase family of proteins and the product of the pro-to-oncogene MET. The encoded preproprotein is proteolytically processed to generate alpha and beta subunits that are linked via disulfide bonds to form the mature receptor. Further processing of the beta subunit results in the formation of the M10 peptide, which has been shown to reduce lung fibrosis. Binding of its ligand, hepatocyte growth factor, induces dimerization and activation of the receptor, which plays a role in cellular survival, embryogenesis, and cellular migration and invasion. Mutations in this gene are associated with papillary renal cell carcinoma, hepatocellular carcinoma, and various head and neck cancers. Amplification and overexpression of this gene are also associated with multiple human cancers.
基因ID	4233
基因名	MET
Swiss	P08581
别名	MET;AUTS9;DFNB97;HGFR;RCCP2;c-Met

产品验证



Immunohistochemical analysis of paraffin-embedded human stomach, using Met (c-Met) Antibody .



Western blot analysis of Met (c-Met) expressed in Rat kidney using Met (c-Met) Rabbit mAb at 1:1000. Secondary antibody: HRP Goat Anti-Rabbit IgG (H+L) at 1:5000. Lysates/proteins: 30ug per lane. Blocking buffer: 5% non-fat dry milk in TBST. Detection: ECL Enhanced Kit. Exposure time: 120s.

实验步骤

访问官网浏览详情: www.ablybio.cn