

LY6A Rabbit mAb

货号: **AYM29141**

产品信息

反应	Mouse
宿主	Rabbit
克隆性	Monoclonal
预测反应	
应用	WB IHC
推荐浓度	WB: 1:500 - 1:2000 IHC: 1:50 - 1:200
理论分子量	18kDa
实测分子量	18kDa
形式	Liquid
保存条件	Store at -20°C. Avoid freeze / thaw cycles. Buffer: PBS with 0.75% BSA,50% glycerol,pH7.3.
偶联物	Unconjugated
阳性对照	Mouse lung,Mouse spleen,Mouse kidney
细胞定位	external side of plasma membrane,plasma membrane
纯化	Affinity purification

抗原信息

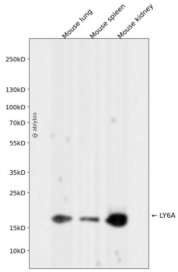
抗原信息	Recombinant fusion protein corresponding to Mouse LY6A.
序列	MDTSHTTKSCLLILLVALLCAERAQGLECYQCYGVPFETSCPSITCPYPDGVCVTQEAAVIVDSQTRKVKNNLCLPICPPNIES MEILGTKVNVKTSCCQ

靶点信息

研究背景	T-cell activation.
基因ID	110454
基因名	

Swiss	P05533
别名	Ly-6A.2; Ly-6A/E; Ly-6E.1; Sca-1; Sca1; TAP

产品验证



Western blot analysis of LY6A expressed in Mouse lung, Mouse spleen, Mouse kidney using LY6A Rabbit mAb at 1:1000. Secondary antibody: HRP Goat Anti-Rabbit IgG (H+L) at 1:5000. Lysates/proteins: 30ug per lane. Blocking buffer: 5% non-fat dry milk in TBST. Detection: ECL Enhanced Kit. Exposure time: 120 S.

实验步骤

访问官网浏览详情: www.ablybio.cn