

p150 CAF1 Rabbit mAb

货号: **AYM29125**

产品信息

反应	Human
宿主	Rabbit
克隆性	Monoclonal
预测反应	
应用	WB IHC IF/ICC IP FC
推荐浓度	WB: 1:500 - 1:2000 IHC: 1:50 - 1:200 IF/ICC: 1:50 - 1:200 IP: 1:20 - 1:50 FC: 1:20 - 1:50
理论分子量	84kDa/88kDa/106kDa
实测分子量	150kDa
形式	Liquid
保存条件	Store at -20°C. Avoid freeze / thaw cycles. Buffer: PBS with 0.75% BSA,50% glycerol,pH7.3.
偶联物	Unconjugated
阳性对照	HeLa,K-562
细胞定位	Nucleus
纯化	Affinity purification

抗原信息

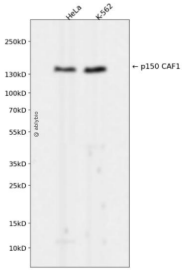
抗原信息	Recombinant fusion protein corresponding to Human p150 CAF1.
序列	MLEEECGAPGARGAATAMDCKDRPAFPVKLIQARLPFKRLNLVPGKADDMSDDQGTSVQSKSPDLEASLDTLENNC HVGSDIDFRPKLVNGKGPLDNFLRNRIETSIGQSTVIIDLTEDSNEQPDSLVDHKNLNSEASPSREAINGQREDTGDQQGL LKAIQNDKLAFPGETLSDIPCKTEEEGVGCGGAGRRGDSQ

靶点信息

研究背景	Chromatin assembly factor I (CAF1) is a nuclear complex consisting of p50, p60 (CHAF1B; MIM 601245), and p150 (CHAF1A) subunits that assembles histone octamers onto replicating DNA in vitro (Kaufman et al., 1995 [PubMed 7600578]).[supplied by OMIM, Mar 2008]
------	--

基因ID	10036
基因名	CHAF1A
Swiss	Q13111
别名	CHAF1A;CAF-1;CAF1;CAF1B;CAF1P150;P150

产品验证



Western blot analysis of p150 CAF1 expressed in HeLa, K-562 using p150 CAF1 Rabbit mAb at 1:1000. Secondary antibody: HRP Goat Anti-Rabbit IgG (H+L) at 1:5000. Lysates/proteins: 30ug per lane. Blocking buffer: 5% non-fat dry milk in TBST. Detection: ECL Enhanced Kit. Exposure time: 120s.

实验步骤

访问官网浏览详情: www.ablybio.cn