

CD3 epsilon Rabbit mAb

货号: **AYM29122**

产品信息

反应	Human
宿主	Rabbit
克隆性	Monoclonal
预测反应	
应用	IHC ICC IP
推荐浓度	IHC: 1:50 - 1:200 ICC: 1:50 - 1:200 IP: 1:20 - 1:50
理论分子量	23kDa
实测分子量	23kDa
形式	Liquid
保存条件	Store at -20°C. Avoid freeze / thaw cycles. Buffer: PBS with 0.75% BSA,50% glycerol,pH7.3.
偶联物	Unconjugated
阳性对照	Jurkat
细胞定位	Cell membrane,Single-pass type I membrane protein
纯化	Affinity purification

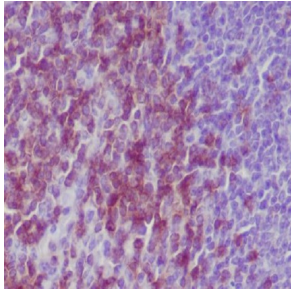
抗原信息

抗原信息	Recombinant fusion protein corresponding to Human CD3 epsilon.
序列	PRGSKPEDANFYLYLRARVCENCMEMDVM SVATIVVDICITGGLLLL VYYWSKNRKAKAKPVTRGAGAGGRQRGQNKER PPPVPNPDYEPiRKGQRDLYSGLNQRRi

靶点信息

研究背景	The protein encoded by this gene is the CD3-epsilon polypeptide, which together with CD3-gamma, -delta and -zeta, and the T-cell receptor alpha/beta and gamma/delta heterodimers, forms the T-cell receptor-CD3 complex. This complex plays an important role in coupling antigen recognition to several intracellular signal-transduction pathways. The genes encoding the epsilon, gamma and delta polypeptides are located in the same cluster on chromosome 11. The epsilon polypeptide plays an essential role in T-cell development. Defects in this gene cause immunodeficiency. This gene has also been linked to a susceptibility to type 1 diabetes in women.
基因ID	916
基因名	CD3E
Swiss	P07766
别名	CD3E;IMD18;T3E;TCRE;CD3e molecule

产品验证



Immunohistochemical analysis of paraffin-embedded mouse spleen, using CD3 epsilon Antibody.

实验步骤

访问官网浏览详情: www.ablybio.cn