

Phospho-alpha Synuclein (S129) Rabbit mAb

货号: **AYM29109**

产品信息

反应	Human
宿主	Rabbit
克隆性	Monoclonal
预测反应	
应用	WB IHC IF/ICC
推荐浓度	WB: 1:500 - 1:2000 IHC: 1:50 - 1:200 IF/ICC: 1:50 - 1:200
理论分子量	11kDa/13kDa/14kDa
实测分子量	18kDa
形式	Liquid
保存条件	Store at -20°C. Avoid freeze / thaw cycles. Buffer: PBS with 0.75% BSA,50% glycerol,pH7.3.
偶联物	Unconjugated
阳性对照	293T,Mouse brain,Rat brain
细胞定位	Cell junction,Cytoplasm,Membrane,Nucleus,Secreted,cytosol,synapse
纯化	Affinity purification

抗原信息

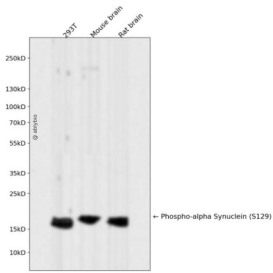
抗原信息	Recombinant fusion protein corresponding to Human Phospho-alpha Synuclein (S129) .
序列	TKEQVTNVGGAVVTGVTAVAQKTVEGAGSIAAATGFVKKDQLGKNEEGAPQEGILEDMPVDPDNEAYEMPSEEGYQDYE PEA

靶点信息

研究背景	Alpha-synuclein is a member of the synuclein family, which also includes beta- and gamma-synuclein. Synucleins are abundantly expressed in the brain and alpha- and beta-synuclein inhibit phospholipase D2 selectively. SNCA may serve to integrate presynaptic signaling and membrane trafficking. Defects in SNCA have been implicated in the pathogenesis of Parkinson disease. SNCA peptides are a major component of amyloid plaques in the brains of patients with Alzheimer's disease. Alternatively spliced transcripts encoding different isoforms have been identified for this gene.
------	--

基因ID	6622
基因名	SNCA
Swiss	P37840
别名	PD1;NACP;PARK1;PARK4;SNCA

产品验证



Western blot analysis of Phospho-alpha Synuclein (S129) expressed in 293T, Mouse brain, Rat brain using Phospho-alpha Synuclein (S129) Rabbit mAb at 1:1000. Secondary antibody: HRP Goat Anti-Rabbit IgG (H+L) at 1:5000. Lysates/proteins: 30ug per lane. Blocking buffer: 5% non-fat dry milk in TBST. Detection: ECL Enhanced Kit. Exposure time: 120s.

实验步骤

访问官网浏览详情: www.ablybio.cn