

LEF1 Rabbit mAb

货号: **AYM29107**

产品信息

反应	Human,Rat
宿主	Rabbit
克隆性	Monoclonal
预测反应	
应用	WB IHC IF/ICC
推荐浓度	WB: 1:500 - 1:2000 IHC: 1:50 - 1:200 IF/ICC: 1:50 - 1:200
理论分子量	23kDa/31kDa/34kDa/35kDa/41kDa/42kDa/44kDa
实测分子量	44kDa
形式	Liquid
保存条件	Store at -20°C. Avoid freeze / thaw cycles. Buffer: PBS with 0.75% BSA,50% glycerol,pH7.3.
偶联物	Unconjugated
阳性对照	BxPC-3,Jurkat,Mouse thymus,Rat testis
细胞定位	Nucleus
纯化	Affinity purification

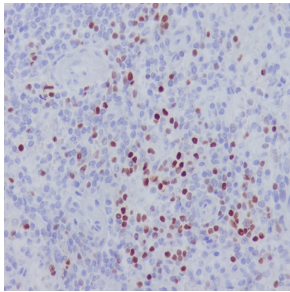
抗原信息

抗原信息	Recombinant fusion protein corresponding to Human LEF1.
序列	TDEMIPFKDEGDQPQKEKIFAEISHPEEEGLADIKSSLVNESEIIPASNGHEVARQAQTSQEPYHDKAREHPDDGKHPDGG LYNKGPSYSSYSYGYIMMPNMNNDPYMSNGSLS

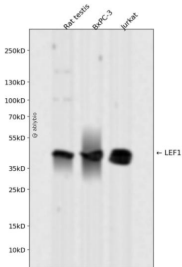
靶点信息

研究背景	This gene encodes a transcription factor belonging to a family of proteins that share homology with the high mobility group protein-1. The protein encoded by this gene can bind to a functionally important site in the T-cell receptor-alpha enhancer, thereby conferring maximal enhancer activity. This transcription factor is involved in the Wnt signaling pathway, and it may function in hair cell differentiation and follicle morphogenesis. Mutations in this gene have been found in somatic sebaceous tumors. This gene has also been linked to other cancers, including androgen-independent prostate cancer. Alternative splicing results in multiple transcript variants.
基因ID	51176
基因名	LEF1
Swiss	Q9UJU2
别名	LEF1;LEF-1;TCF10;TCF1ALPHA;TCF7L3

产品验证



Immunohistochemical analysis of paraffin-embedded human spleen, using LEF1 Antibody.



Western blot analysis of LEF1 expressed in Rat testis, BxPC-3, Jurkat using LEF1 Rabbit mAb at 1:1000. Secondary antibody: HRP Goat Anti-Rabbit IgG (H+L) at 1:5000. Lysates/proteins: 30ug per lane. Blocking buffer: 5% non-fat dry milk in TBST. Detection: ECL Enhanced Kit. Exposure time: 120s.

实验步骤

访问官网浏览详情: www.ablybio.cn