

A-RAF Rabbit mAb

货号: **AYM29106**

产品信息

反应	Human
宿主	Rabbit
克隆性	Monoclonal
预测反应	
应用	WB IHC IF/ICC FC
推荐浓度	WB: 1:500 - 1:2000 IHC: 1:50 - 1:200 IF/ICC: 1:50 - 1:200 FC: 1:20 - 1:50
理论分子量	68kDa
实测分子量	68kDa
形式	Liquid
保存条件	Store at -20°C. Avoid freeze / thaw cycles. Buffer: PBS with 0.75% BSA,50% glycerol,pH7.3.
偶联物	Unconjugated
阳性对照	HeLa,MCF7
细胞定位	cytosol,mitochondrion
纯化	Affinity purification

抗原信息

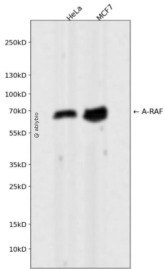
抗原信息	Recombinant fusion protein corresponding to Human A-RAF.
序列	RQHEAPSNRPLNELLTPQGSPRTQHCDPEHFPPAPANAPLQRIRSTSTPNVHMVSTTAPMDSNLIQLTGQSFSTDAAGSRGGSDGTPRGSPSPASVSSGRKSPHSKSPAEQRERKSLADDDKKK

靶点信息

研究背景	This proto-oncogene belongs to the RAF subfamily of the Ser/Thr protein kinase family, and maybe involved in cell growth and development. Alternatively spliced transcript variants encoding different isoforms have been found for this gene.[provided by RefSeq, Jan 2012]
基因ID	369

基因名	ARAF
Swiss	P10398
别名	A-RAF; ARAF1; PKS2; RAFA1

产品验证



Western blot analysis of A-RAF expressed in HeLa, MCF7 using A-RAF Rabbit mAb at 1:1000. Secondary antibody: HRP Goat Anti-Rabbit IgG (H+L) at 1:5000. Lysates/proteins: 30ug per lane. Blocking buffer: 5% non-fat dry milk in TBST. Detection: ECL Enhanced Kit. Exposure time: 120s.

实验步骤

访问官网浏览详情: www.ablybio.cn