

Phospho-SMC1 (S957) Rabbit mAb

货号: **AYM29100**

产品信息

反应	Human
宿主	Rabbit
克隆性	Monoclonal
预测反应	
应用	WB IHC ICC
推荐浓度	WB: 1:500 - 1:2000 IHC: 1:50 - 1:200 ICC: 1:50 - 1:200
理论分子量	143kDa
实测分子量	160kDa
形式	Liquid
保存条件	Store at -20°C. Avoid freeze / thaw cycles. Buffer: PBS with 0.75% BSA,50% glycerol,pH7.3.
偶联物	Unconjugated
阳性对照	HeLa,293T,Jurkat,Mouse lung,Mouse brain,Mouse spleen
细胞定位	Chromosome,Nucleus,centromere,kinetochore
纯化	Affinity purification

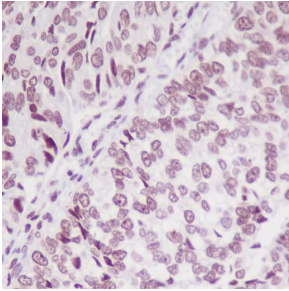
抗原信息

抗原信息	Recombinant fusion protein corresponding to Human Phospho-SMC1 (S957).
序列	TVAALALLFAIHSYKPAPFFVLDEIDAALDNTNIGKVANYIKEQSTCNFQAIVISLKEEFYTKAESLIGVYPEQGDCVISKVLTF DLTKYPDANPNPNEQ

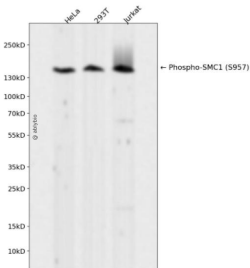
靶点信息

研究背景	Proper cohesion of sister chromatids is a prerequisite for the correct segregation of chromosomes during cell division. The cohesin multiprotein complex is required for sister chromatid cohesion. This complex is composed partly of two structural maintenance of chromosomes (SMC) proteins, SMC3 and either SMC1B or the protein encoded by this gene. Most of the cohesin complexes dissociate from the chromosomes before mitosis, although those complexes at the kinetochore remain. Therefore, the encoded protein is thought to be an important part of functional kinetochores. In addition, this protein interacts with BRCA1 and is phosphorylated by ATM, indicating a potential role for this protein in DNA repair. This gene, which belongs to the SMC gene family, is located in an area of the X-chromosome that escapes X inactivation. Mutations in this gene result in Cornelia de Lange syndrome. Alternative splicing results in multiple transcript variants encoding different isoforms. [provided by RefSeq, Jul 2013]
基因ID	8243
基因名	SMC1A
Swiss	Q14683
别名	CDLS2; DXS423E; SB1.8; SMC1; SMC1L1; SMC1alpha; SMCB

产品验证



Immunohistochemical analysis of paraffin-embedded human bladder cancer, using Phospho-SMC1 (S957) Antibody.



Western blot analysis of Phospho-SMC1 (S957) expressed in HeLa, 293T, Jurkat using Phospho-SMC1 (S957) Rabbit mAb at 1:1000. Secondary antibody: HRP Goat Anti-Rabbit IgG (H+L) at 1:5000. Lysates/proteins: 30ug per lane. Blocking buffer: 5% non-fat dry milk in TBST. Detection: ECL Enhanced Kit. Exposure time: 120s.

实验步骤

访问官网浏览详情: www.ablybio.cn