

# RalA Rabbit mAb

货号: **AYM29095**

## 产品信息

反应	Human
宿主	Rabbit
克隆性	Monoclonal
预测反应	
应用	WB IHC
推荐浓度	<b>WB:</b> 1:500 - 1:2000 <b>IHC:</b> 1:50 - 1:200
理论分子量	23kDa
实测分子量	25kDa
形式	Liquid
保存条件	Store at -20°C. Avoid freeze / thaw cycles. Buffer: PBS with 0.75% BSA,50% glycerol,pH7.3.
偶联物	Unconjugated
阳性对照	A-549,HT-29,Mouse lung,Rat ovary
细胞定位	Cell membrane,Cell surface,Cleavage furrow,Cytoplasmic side,Lipid-anchor,Midbody
纯化	Affinity purification

## 抗原信息

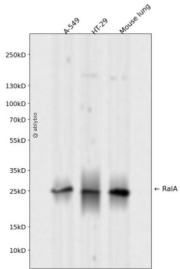
抗原信息	Recombinant fusion protein corresponding to Human RalA.
序列	MAANKPKGQNSLALHKVIMVGGSGGVGKSALTLQFMYDEFVEDYEPTKADSYRKKVVLVDGEEVQIDILDTAGQEDYAAIRD NYFRSGEGFLCVFSITEMESFAATADFREQILRVKEDENVPFLLVGNKSDLEDKRQVSVVEEAKNRAEQWNVNYVETSAKTR ANVDKVFDFLREIRARKMEDSKEKNGKKKRKSLAKRIRERCCIL

## 靶点信息

研究背景	The product of this gene belongs to the small GTPase superfamily, Ras family of proteins. GTP-binding proteins mediate the transmembrane signaling initiated by the occupancy of certain cell surface receptors. This gene encodes a low molecular mass ras-like GTP-binding protein that shares about 50% similarity with other ras proteins.
基因ID	5898

基因名	RALA
Swiss	P11233
别名	RALA;RAL

## 产品验证



Western blot analysis of RALA expressed in A-549,HT-29,Mouse lung using RALA Rabbit mAb at 1:1000. Secondary antibody: HRP Goat Anti-Rabbit IgG (H+L) at 1:5000. Lysates/proteins: 30ug per lane. Blocking buffer: 5% non-fat dry milk in TBST. Detection: ECL Enhanced Kit. Exposure time: 120s.

## 实验步骤

访问官网浏览详情: [www.ablybio.cn](http://www.ablybio.cn)