

ATP5G1 Rabbit mAb

货号: **AYM29090**

产品信息

反应	Human,Mouse,Rat
宿主	Rabbit
克隆性	Monoclonal
预测反应	
应用	WB IF/ICC
推荐浓度	WB: 1:500 - 1:2000 IF/ICC: 1:50 - 1:200
理论分子量	
实测分子量	8kDa
形式	Liquid
保存条件	Store at -20°C. Avoid freeze / thaw cycles. Buffer: PBS with 0.75% BSA,50% glycerol,pH7.3.
偶联物	Unconjugated
阳性对照	HL-60,Mouse heart,Mouse small intestine,Mouse liver,Rat heart,Rat brain
细胞定位	mitochondrial inner membrane,mitochondrial proton-transporting ATP synthase complex,mitochondrial proton-transporting ATP synthase complex, coupling factor F(o),mitochondrion
纯化	Affinity purification

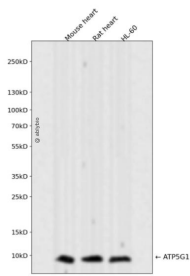
抗原信息

抗原信息	Recombinant fusion protein corresponding to Human ATP5G1.
序列	MQTAGALFISPALIRCCTRGLIRPVSASFNLNSPVNSSKQPSYSNFPLQVARREFQTSVVSRRIDTAAKFIGAGAATVGVAGS GAGIGTVFGSLIIGYARN

靶点信息

研究背景	This gene encodes a subunit of mitochondrial ATP synthase. Mitochondrial ATP synthase catalyzes ATP synthesis, utilizing an electrochemical gradient of protons across the inner membrane during oxidative phosphorylation. ATP synthase is composed of two linked multi-subunit complexes: the soluble catalytic core, F1, and the membrane-spanning component, Fo, comprising the proton channel. The catalytic portion of mitochondrial ATP synthase consists of 5 different subunits (alpha, beta, gamma, delta, and epsilon) assembled with a stoichiometry of 3 alpha, 3 beta, and a single representative of the other 3. The proton channel seems to have nine subunits (a, b, c, d, e, f, g, F6 and 8). This gene is one of three genes that encode subunit c of the proton channel. Each of the three genes have distinct mitochondrial import sequences but encode the identical mature protein. Alternatively spliced transcript variants encoding the same protein have been identified. [provided by RefSeq, Jul 2008]
基因ID	516
基因名	ATP5G1
Swiss	P05496
别名	

产品验证



Western blot analysis of ATP5G1 expressed in Mouse heart, Rat heart, HL-60 using ATP5G1 Rabbit mAb at 1:1000. Secondary antibody: HRP Goat Anti-Rabbit IgG (H+L) at 1:5000. Lysates/proteins: 30ug per lane. Blocking buffer: 5% non-fat dry milk in TBST. Detection: ECL Enhanced Kit. Exposure time: 120s.

实验步骤

访问官网浏览详情: www.ablybio.cn