

Clathrin heavy chain Rabbit mAb

货号: **AYM29085**

产品信息

反应	Human,Mouse,Rat
宿主	Rabbit
克隆性	Monoclonal
预测反应	
应用	WB IHC
推荐浓度	WB: 1:500 - 1:2000 IHC: 1:50 - 1:200
理论分子量	191kDa
实测分子量	191kDa
形式	Liquid
保存条件	Store at -20°C. Avoid freeze / thaw cycles. Buffer: PBS with 0.75% BSA,50% glycerol,pH7.3.
偶联物	Unconjugated
阳性对照	NIH/3T3,Jurkat,C6,Mouse kidney,Rat kidney
细胞定位	Cytoplasmic side,Cytoplasmic vesicle membrane,Melanosome,Membrane,Peripheral membrane protein,c coated pit
纯化	Affinity purification

抗原信息

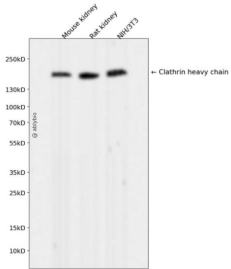
抗原信息	Recombinant fusion protein corresponding to Human Clathrin heavy chain.
序列	SFAQFKMEGNAEESTLFCFAVRGQAGGKLHIIIEVGTPTGNQPFPPKAVDVFFPPEAQNDFPVAMQISEKHDVVFLITKYG YIHLVDLETGTCIYMNRISG

靶点信息

研究背景	Clathrin is a major protein component of the cytoplasmic face of intracellular organelles, called coated vesicles and coated pits. These specialized organelles are involved in the intracellular trafficking of receptors and endocytosis of a variety of macromolecules. The basic subunit of the clathrin coat is composed of three heavy chains and three light chains. [provided by RefSeq, Jul 2008]
基因ID	1213

基因名	CLTC
Swiss	Q00610/P53675
别名	CHC; CHC17; CLH-17; CLTCL2; Hc

产品验证



Western blot analysis of Clathrin heavy chain expressed in Mouse kidney,Rat kidney,NIH/3T3 using Clathrin heavy chain Rabbit mAb at 1:1000. Secondary antibody: HRP Goat Anti-Rabbit IgG (H+L) at 1:5000. Lysates/proteins: 30ug per lane. Blocking buffer: 5% non-fat dry milk in TBST. Detection: ECL Enhanced Kit. Exposure time: 120s.

实验步骤

访问官网浏览详情: www.ablybio.cn