

# ATP1B3 Rabbit mAb

货号: **AYM29075**

## 产品信息

反应	Human,Mouse,Rat
宿主	Rabbit
克隆性	Monoclonal
预测反应	
应用	WB IHC
推荐浓度	<b>WB:</b> 1:500 - 1:2000 <b>IHC:</b> 1:50 - 1:200
理论分子量	37kDa
实测分子量	37kDa
形式	Liquid
保存条件	Store at -20°C. Avoid freeze / thaw cycles. Buffer: PBS with 0.75% BSA,50% glycerol,pH7.3.
偶联物	Unconjugated
阳性对照	293T,U-87MG,Mouse lung,Mouse testis,Mouse brain,Rat lung,Rat testis,Rat spleen
细胞定位	apical plasma membrane,basolateral plasma membrane,extracellular exosome,melanosome,plasma membrane,sperm flagellum
纯化	Affinity purification

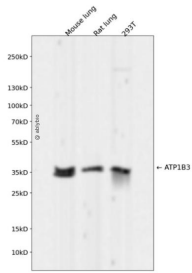
## 抗原信息

抗原信息	Recombinant fusion protein corresponding to Human ATP1B3.
序列	GLKPEGVPRIDCVSKNEDIPNAVYPHNGMIDLKYPYGGKLVHGYLQPLVAVQVSFAPNNTGKEVTVECKIDGSANLKS QDDRDKFLGRVMFKITARA

## 靶点信息

研究背景	The protein encoded by this gene belongs to the family of Na <sup>+</sup> /K <sup>+</sup> and H <sup>+</sup> /K <sup>+</sup> ATPases beta chain proteins, and to the subfamily of Na <sup>+</sup> /K <sup>+</sup> -ATPases. Na <sup>+</sup> /K <sup>+</sup> -ATPase is an integral membrane protein responsible for establishing and maintaining the electrochemical gradients of Na and K ions across the plasma membrane. These gradients are essential for osmoregulation, for sodium-coupled transport of a variety of organic and inorganic molecules, and for electrical excitability of nerve and muscle. This enzyme is composed of two subunits, a large catalytic subunit (alpha) and a smaller glycoprotein subunit (beta). The beta subunit regulates, through assembly of alpha/beta heterodimers, the number of sodium pumps transported to the plasma membrane. The glycoprotein subunit of Na <sup>+</sup> /K <sup>+</sup> -ATPase is encoded by multiple genes. This gene encodes a beta 3 subunit. This gene encodes a beta 3 subunit. A pseudogene exists for this gene, and it is located on chromosome 2. [provided by RefSeq, Jul 2008]
基因ID	483
基因名	ATP1B3
Swiss	P54709
别名	ATPB-3; CD298

## 产品验证



Western blot analysis of ATP1B3 expressed in Mouse lung, Rat lung, 293T using ATP1B3 Rabbit mAb at 1:1000. Secondary antibody: HRP Goat Anti-Rabbit IgG (H+L) at 1:5000. Lysates/proteins: 30ug per lane. Blocking buffer: 5% non-fat dry milk in TBST. Detection: ECL Enhanced Kit. Exposure time: 120s.

## 实验步骤

访问官网浏览详情: [www.ablybio.cn](http://www.ablybio.cn)