

Cip4 Rabbit mAb

货号: **AYM29061**

产品信息

| | |
|-------|---|
| 反应 | Human,Mouse |
| 宿主 | Rabbit |
| 克隆性 | Monoclonal |
| 预测反应 | |
| 应用 | WB IHC |
| 推荐浓度 | WB: 1:500 - 1:2000 IHC: 1:50 - 1:200 |
| 理论分子量 | 39kDa/52kDa/62kDa/67kDa/68kDa |
| 实测分子量 | 75kDa |
| 形式 | Liquid |
| 保存条件 | Store at -20°C. Avoid freeze / thaw cycles. Buffer: PBS with 0.75% BSA,50% glycerol,pH7.3. |
| 偶联物 | Unconjugated |
| 阳性对照 | HepG2,HeLa,SKOV3,A673,5637,Mouse kidney,Mouse heart,Mouse lung |
| 细胞定位 | Cell membrane,Cell projection,Cytoplasm,Golgi apparatus,Lysosome,cell cortex,cytoskeleton,perinuclear region,phagocytic cup |
| 纯化 | Affinity purification |

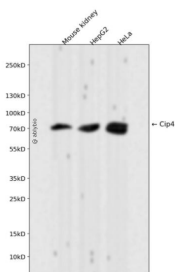
抗原信息

| | |
|------|---|
| 抗原信息 | Recombinant fusion protein corresponding to Human Cip4. |
| 序列 | AKCLEGMKVAANAVDPKNDSHVLIELHKSGFARPGDVEFEDFSQPMNRAPSDSSSLGTPSDGRPELRGPRSRTRKRWPF GKKNKTVVTEDFSLPPEQQRKRLQQLEERSRELQKEVDQREALKKMKDVYEKTPQMGPASLEPQIAETLSNIERLKLE VQKYEAWLAEAESRVLNRRGDSLSRHARPPDPPASAPPDSSSNSASQDTKESSEPPSEESQDTPIYTEFDEDFEEETSP IGHCVAIYHFEGSSEGTISMAEGEDLSLMEEDKGDGWTRVRRKEGEGYVPTSYLRVTLN |

靶点信息

| | |
|-------|--|
| 研究背景 | Required for translocation of GLUT4 to the plasma membrane in response to insulin signaling (By similarity). Required to coordinate membrane tubulation with reorganization of the actin cytoskeleton during endocytosis. Binds to lipids such as phosphatidylinositol 4,5-bisphosphate and phosphatidylserine and promotes membrane invagination and the formation of tubules. Also promotes CDC42-induced actin polymerization by recruiting WASL/N-WASP which in turn activates the Arp2/3 complex. Actin polymerization may promote the fission of membrane tubules to form endocytic vesicles. Required for the formation of podosomes, actin-rich adhesion structures specific to monocyte-derived cells. May be required for the lysosomal retention of FASLG/FASL. |
| 基因ID | 9322 |
| 基因名 | TRIP10 |
| Swiss | Q15642 |
| 别名 | TRIP10;CIP4;HSTP;STOT;STP;TRIP-10 |

产品验证



Western blot analysis of Cip4 expressed in Mouse kidney, HepG2, HeLa using Cip4 Rabbit mAb at 1:1000. Secondary antibody: HRP Goat Anti-Rabbit IgG (H+L) at 1:5000. Lysates/proteins: 30ug per lane. Blocking buffer: 5% non-fat dry milk in TBST. Detection: ECL Enhanced Kit. Exposure time: 120s.

实验步骤

访问官网浏览详情: www.ablybio.cn