

TUB1 Rabbit mAb

货号: **AYM29059**

产品信息

反应	Human,Mouse,Rat
宿主	Rabbit
克隆性	Monoclonal
预测反应	
应用	WB IHC
推荐浓度	WB: 1:500 - 1:2000 IHC: 1:50 - 1:200
理论分子量	
实测分子量	60kDa
形式	Liquid
保存条件	Store at -20°C. Avoid freeze / thaw cycles. Buffer: PBS with 0.75% BSA,50% glycerol,pH7.3.
偶联物	Unconjugated
阳性对照	U-87MG,U-251MG,PC-3
细胞定位	cilium,cytoplasm,cytosol,extracellular region,nucleus,plasma membrane
纯化	Affinity purification

抗原信息

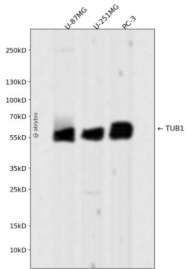
抗原信息	Recombinant fusion protein corresponding to Human TUB1.
序列	LSSSGSTSYQVQEADSLASVQLGATRPTAPASAKRTKAAATAGGQGGGAARKEKKGKHKGTSGPAALAEDKSEAQGPVQI LTVGQSDHAQDAGETAAGGGER

靶点信息

研究背景	This gene encodes a member of the Tubby family of bipartite transcription factors. The encoded protein may play a role in obesity and sensorineural degradation. The crystal structure has been determined for a similar protein in mouse, and it functions as a membrane-bound transcription regulator that translocate s to the nucleus in response to phosphoinositide hydrolysis. Two transcript variants encoding distinct isoforms have been identified for this gene. [provided by RefSeq, Jul 2008]
基因ID	7275

基因名	TUB
Swiss	P50607
别名	RDOB;rd5;TUB

产品验证



Western blot analysis of TUB1 expressed in U-87MG,U-251MG,PC-3 using TUB1 Rabbit mAb at 1:1000. Secondary antibody: HRP Goat Anti-Rabbit IgG (H+L) at 1:5000. Lysates/proteins: 30ug per lane. Blocking buffer: 5% non-fat dry milk in TBST. Detection: ECL Enhanced Kit. Exposure time: 120s.

实验步骤

访问官网浏览详情: www.ablybio.cn