

PKC mu Rabbit mAb

货号: **AYM29058**

产品信息

反应	Human,Mouse,Rat
宿主	Rabbit
克隆性	Monoclonal
预测反应	
应用	WB
推荐浓度	WB: 1:500 - 1:2000
理论分子量	101kDa
实测分子量	102kDa
形式	Liquid
保存条件	Store at -20°C. Avoid freeze / thaw cycles. Buffer: PBS with 0.75% BSA,50% glycerol,pH7.3.
偶联物	Unconjugated
阳性对照	HeLa
细胞定位	Cell membrane,Cytoplasm,Golgi apparatus,trans-Golgi network
纯化	Affinity purification

抗原信息

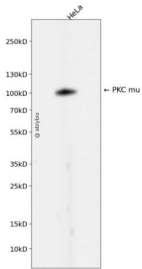
抗原信息	Recombinant fusion protein corresponding to Human PKC mu.
序列	RVSIL

靶点信息

研究背景	The protein encoded by this gene is a serine/threonine protein kinase involved in many cellular processes , including Golgi body membrane integrity and transport, cell migration and differentiation, MAPK8/JNK1 and Ras pathway signaling, MAPK1/3 (ERK1/2) pathway signaling, cell survival, and regulation of cell shape and adhesion. [provided by RefSeq, Jan 2017]
基因ID	5587
基因名	PRKD1

Swiss	Q15139
别名	CHDED;PKC-MU;PKCM;PKD;PRKCM;PRKD1

产品验证



Western blot analysis of PKC mu expressed in HeLa using PKC mu Rabbit mAb at 1:1000. Secondary antibody: HRP Goat Anti-Rabbit IgG (H+L) at 1:5000. Lysates/proteins: 30ug per lane. Blocking buffer: 5% non-fat dry milk in TBST. Detection: ECL Enhanced Kit. Exposure time: 120s.

实验步骤

访问官网浏览详情: www.ablybio.cn