

Cyclin B1 Rabbit mAb

货号: **AYM29046**

产品信息

反应	Human
宿主	Rabbit
克隆性	Monoclonal
预测反应	
应用	WB IHC IF/ICC IP FC
推荐浓度	WB: 1:500 - 1:2000 IHC: 1:50 - 1:200 IF/ICC: 1:50 - 1:200 IP: 1:20 - 1:50 FC: 1:20 - 1:50
理论分子量	44kDa/48kDa
实测分子量	60kDa
形式	Liquid
保存条件	Store at -20°C. Avoid freeze / thaw cycles. Buffer: PBS with 0.75% BSA,50% glycerol,pH7.3.
偶联物	Unconjugated
阳性对照	C2C12,C6,Jurkat,Rat testis
细胞定位	Cytoplasm,Nucleus,centrosome,cytoskeleton,microtubule organizing center
纯化	Affinity purification

抗原信息

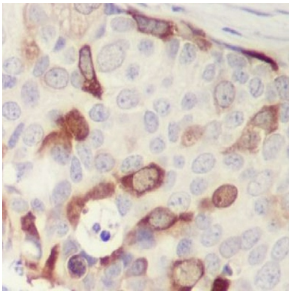
抗原信息	Recombinant fusion protein corresponding to Human Cyclin B1.
序列	YDMVHFPPSQIAAGAFCLALKILDNGEWTPTLQHYLSYTEESLLPVMQHLAKNVVMVNQGLTKHMTVKNKYATSKHAKIST LPQLNSALVQDLAKAVAKV

靶点信息

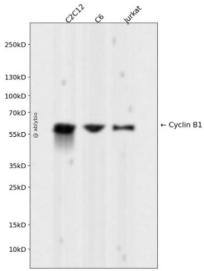
研究背景	The protein encoded by this gene is a regulatory protein involved in mitosis. The gene product complexes with p34(cdc2) to form the maturation-promoting factor (MPF). Two alternative transcripts have been found, a constitutively expressed transcript and a cell cycle-regulated transcript, that is expressed predominantly during G2/M phase. The different transcripts result from the use of alternate transcription initiation sites.
------	--

基因ID	891
基因名	CCNB1
Swiss	P14635
别名	CCNB;CCNB1;Cyclin B1;cyclin B1

产品验证



Immunohistochemical analysis of paraffin-embedded human breast cancer, using Cyclin B1 Antibody.



Western blot analysis of Cyclin B1 expressed in C2C12, C6, Jurkat using Cyclin B1 Rabbit mAb at 1:1000. Secondary antibody: HRP Goat Anti-Rabbit IgG (H+L) at 1:5000. Lysates/proteins: 30ug per lane. Blocking buffer: 5% non-fat dry milk in TBST. Detection: ECL Enhanced Kit. Exposure time: 120s.

实验步骤

访问官网浏览详情: www.ablybio.cn