

ABCG1 Rabbit mAb

货号: **AYM29036**

产品信息

反应	Human,Rat
宿主	Rabbit
克隆性	Monoclonal
预测反应	
应用	WB IHC ICC
推荐浓度	WB: 1:500 - 1:2000 IHC: 1:50 - 1:200 ICC: 1:50 - 1:200
理论分子量	71kDa/73kDa/74kDa/75kDa/86kDa
实测分子量	110kDa
形式	Liquid
保存条件	Store at -20°C. Avoid freeze / thaw cycles. Buffer: PBS with 0.75% BSA,50% glycerol,pH7.3.
偶联物	Unconjugated
阳性对照	HeLa,HepG2
细胞定位	Endoplasmic reticulum membrane,Golgi apparatus membrane,Multi-pass membrane protein
纯化	Affinity purification

抗原信息

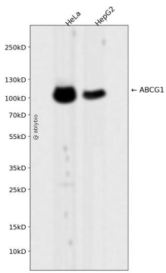
抗原信息	Recombinant fusion protein corresponding to Human ABCG1.
序列	AAFSVGTAMNASSYSAEMTEPKSVCVSVDEVSSNMEATETDLLNGHLKQVDNNTLTAQRFSSLPRAAVNIEFRDLSYS VPEGPWWRKKGKYLKLGISGKFNSEGLVAIMGPS

靶点信息

研究背景	The protein encoded by this gene is a member of the superfamily of ATP-binding cassette (ABC) transporters. ABC proteins transport various molecules across extra- and intra-cellular membranes. ABC genes are divided into seven distinct subfamilies (ABC1, MDR/TAP, MRP, ALD, OABP, GCN20, White). This protein is a member of the White subfamily. It is involved in macrophage cholesterol and phospholipids transport, and may regulate cellular lipid homeostasis in other cell types. Six alternative splice variants have been identified.
------	---

基因ID	9619
基因名	ABCG1
Swiss	P45844
别名	ABC8;WHITE1;ABCG1

产品验证



Western blot analysis of ABCG1 expressed in HeLa, HepG2 using ABCG1 Rabbit mAb at 1:1000. Secondary antibody: HRP Goat Anti-Rabbit IgG (H+L) at 1:5000. Lysates/proteins: 30ug per lane. Blocking buffer: 5% non-fat dry milk in TBST. Detection: ECL Enhanced Kit. Exposure time: 120s.

实验步骤

访问官网浏览详情: www.ablybio.cn