

ELOVL5 Rabbit mAb

货号: **AYM29026**

产品信息

反应	Human,Mouse,Rat
宿主	Rabbit
克隆性	Monoclonal
预测反应	
应用	WB IF/ICC
推荐浓度	WB: 1:500 - 1:2000 IF/ICC: 1:50 - 1:200
理论分子量	9kDa/35kDa/38kDa
实测分子量	35kDa
形式	Liquid
保存条件	Store at -20°C. Avoid freeze / thaw cycles. Buffer: PBS with 0.75% BSA,50% glycerol,pH7.3.
偶联物	Unconjugated
阳性对照	HepG2
细胞定位	Cell projection,Endoplasmic reticulum membrane,Multi-pass membrane protein,dendrite
纯化	Affinity purification

抗原信息

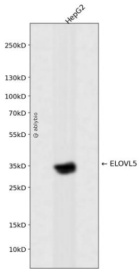
抗原信息	Recombinant fusion protein corresponding to Human ELOVL5.
序列	GVIWPCTFPLGWLYFQIGYMISLIALFTNFYIQTYNKKGASRRKDHLKDHQNGSMAAVNGHTNSFSPLENNVKPRKLRKD

靶点信息

研究背景	This gene belongs to the ELO family. It is highly expressed in the adrenal gland and testis, and encodes a multi-pass membrane protein that is localized in the endoplasmic reticulum. This protein is involved in the elongation of long-chain polyunsaturated fatty acids. Mutations in this gene have been associated with sp inocerebellar ataxia-38 (SCA38). Alternatively spliced transcript variants have been found for this gene.
基因ID	60481

基因名	ELOVL5
Swiss	Q9NYP7
别名	ELOVL5;HELO1;SCA38;dJ483K16.1

产品验证



Western blot analysis of ELOVL5 expressed in HepG2 using ELOVL5 Rabbit mAb at 1:1000. Secondary antibody: HRP Goat Anti-Rabbit IgG (H+L) at 1:5000. Lysates/proteins: 30ug per lane. Blocking buffer: 5% non-fat dry milk in TBST. Detection: ECL Enhanced Kit. Exposure time: 120s.

实验步骤

访问官网浏览详情: www.ablybio.cn