

S100 beta Rabbit mAb

货号: **AYM29022**

产品信息

反应	Human,Mouse,Rat,Goat
宿主	Rabbit
克隆性	Monoclonal
预测反应	
应用	WB IHC IF/ICC IP
推荐浓度	WB: 1:500 - 1:2000 IHC: 1:50 - 1:200 IF/ICC: 1:50 - 1:200 IP: 1:20 - 1:50
理论分子量	10kDa
实测分子量	11kDa
形式	Liquid
保存条件	Store at -20°C. Avoid freeze / thaw cycles. Buffer: PBS with 0.75% BSA,50% glycerol,pH7.3.
偶联物	Unconjugated
阳性对照	A375,Mouse brain,Rat brain,Rat testis
细胞定位	Cytoplasm,Nucleus
纯化	Affinity purification

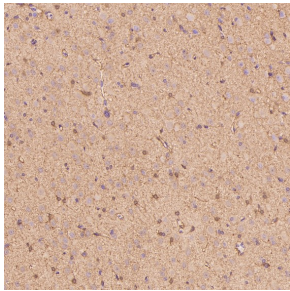
抗原信息

抗原信息	Recombinant fusion protein corresponding to Human S100 beta.
序列	MSELEKAMVALIDVFHQYSGREGDKHKLKSELKELINNELSHFLEEIKEQEVVDKVMETLDNDGDGECDFQEFMAFVAM VTTACHEFFEHE

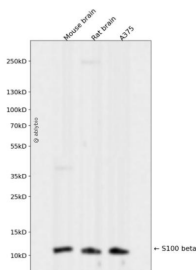
靶点信息

研究背景	The protein encoded by this gene is a member of the S100 family of proteins containing 2 EF-hand calcium-binding motifs. S100 proteins are localized in the cytoplasm and/or nucleus of a wide range of cells, and involved in the regulation of a number of cellular processes such as cell cycle progression and differentiation. S100 genes include at least 13 members which are located as a cluster on chromosome 1q21; however, this gene is located at 21q22.3. This protein may function in neurite extension, proliferation of melanoma cells, stimulation of Ca ²⁺ fluxes, inhibition of PKC-mediated phosphorylation, astrocytosis and axonal proliferation, and inhibition of microtubule assembly. Chromosomal rearrangements and altered expression of this gene have been implicated in several neurological, neoplastic, and other types of diseases, including Alzheimer's disease, Down's syndrome, epilepsy, amyotrophic lateral sclerosis, melanoma, and type I diabetes.
基因ID	6285
基因名	S100B
Swiss	P04271
别名	NEF;S100;S100-B;S100beta;S100B;S100 beta

产品验证



Immunohistochemical analysis of paraffin-embedded Rat cerebral cortex, using the Antibody at 1:500 dilution.



Western blot analysis of S100 beta expressed in Mouse brain, Rat brain, A375 using S100 beta R abbit mAb at 1:1000. Secondary antibody: HRP Goat Anti-Rabbit IgG (H+L) at 1:5000. Lysates/proteins: 30ug per lane. Blocking buffer: 5% non-fat dry milk in TBST. Detection: ECL Enhanced Kit. Exposure time: 120s.

实验步骤

访问官网浏览详情: www.ablybio.cn