

Integrin alpha E Rabbit mAb

货号: **AYM29020**

产品信息

反应	Human
宿主	Rabbit
克隆性	Monoclonal
预测反应	
应用	IHC
推荐浓度	IHC: 1:50 - 1:200
理论分子量	130kDa
实测分子量	25KDa
形式	Liquid
保存条件	Store at -20°C. Avoid freeze / thaw cycles. Buffer: PBS with 0.75% BSA,50% glycerol,pH7.3.
偶联物	Unconjugated
阳性对照	Mouse testis,Mouse spleen,Mouse thymus,Rat testis,Rat thymus
细胞定位	Membrane,Single-pass type I membrane protein
纯化	Affinity purification

抗原信息

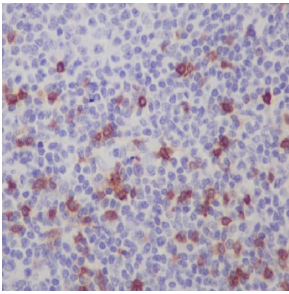
抗原信息	Recombinant fusion protein corresponding to Human Integrin alpha E.
序列	FNVDVARPWLTTPKGGAPFVLSSLLHQDPSTNQTWLLVTSRTRTPGPLHRCSLVQDEILCHPVEHVPIPKGRHRGVTVVR SHHGVLICIQVLVRRPHLSSELTGTCSLLGPDLRPQAQANFFDLENLLDPDARVDTGDCYSNKEGGGEDDVNTARQRRR LEKEEEDKEEEDDEEEEEAG

靶点信息

研究背景	Integrins are heterodimeric integral membrane proteins composed of an alpha chain and a beta chain. This gene encodes an I-domain-containing alpha integrin that undergoes post-translational cleavage in the extracellular domain, yielding disulfide-linked heavy and light chains. In combination with the beta 7 integrin, this protein forms the E-cadherin binding integrin known as the human mucosal lymphocyte-1 antigen. This protein is preferentially expressed in human intestinal intraepithelial lymphocytes (IEL), and in addition to a role in adhesion, it may serve as an accessory molecule for IEL activation.
------	---

基因ID	3682
基因名	ITGAE
Swiss	P38570
别名	ITGAE;CD103;HUMINAE

产品验证



Immunohistochemical analysis of paraffin-embedded human tonsil, using Integrin alpha E Antibody.

实验步骤

访问官网浏览详情: www.ablybio.cn