

Cytokeratin 6 Rabbit mAb

货号: **AYM29004**

产品信息

反应	Human
宿主	Rabbit
克隆性	Monoclonal
预测反应	
应用	WB IHC IF/ICC
推荐浓度	WB: 1:500 - 1:2000 IHC: 1:50 - 1:200 IF/ICC: 1:50 - 1:200
理论分子量	60kDa
实测分子量	60kDa
形式	Liquid
保存条件	Store at -20°C. Avoid freeze / thaw cycles. Buffer: PBS with 0.75% BSA,50% glycerol,pH7.3.
偶联物	Unconjugated
阳性对照	A-431,293T
细胞定位	cytosol,extracellular exosome,nucleus
纯化	Affinity purification

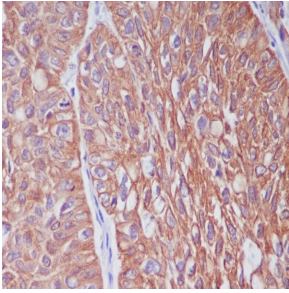
抗原信息

抗原信息	Recombinant fusion protein corresponding to Human Cytokeratin 6.
序列	MASTSTTIRSHSSRRGFSANSARLPGVSRSGFSSVSVRSRSGGLGGACGGAGFGSRSLYGLGGSKRISIGGGSCAIS GGYGSRAGGSYGFGGAGSGF

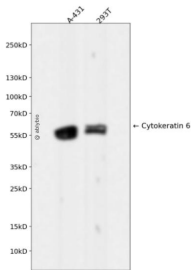
靶点信息

研究背景	The protein encoded by this gene is a member of the keratin gene family. The type II cytokeratins consist of basic or neutral proteins which are arranged in pairs of heterotypic keratin chains coexpressed during differentiation of simple and stratified epithelial tissues. As many as six of this type II cytokeratin (KRT6) have been identified; the multiplicity of the genes is attributed to successive gene duplication events. The genes are expressed with family members KRT16 and/or KRT17 in the filiform papillae of the tongue, the stratified epithelial lining of oral mucosa and esophagus, the outer root sheath of hair follicles, and the glandular epithelia. This KRT6 gene in particular encodes the most abundant isoform. Mutations in these genes have been associated with pachyonychia congenita. In addition, peptides from the C-terminal region of the protein have antimicrobial activity against bacterial pathogens. The type II cytokeratins are clustered in a region of chromosome 12q12-q13.
基因ID	3853
基因名	KRT6A
Swiss	P02538
别名	KRT6A;CK-6C;CK-6E;CK6A;CK6C;CK6D;K6A;K6C;K6D;KRT6C;KRT6D;PC3

产品验证



Immunohistochemical analysis of paraffin-embedded human lung cancer, using Cytokeratin 6 Antibody.



Western blot analysis of Cytokeratin 6 expressed in A-431,293T using Cytokeratin 6 Rabbit mAb at 1:1000. Secondary antibody: HRP Goat Anti-Rabbit IgG (H+L) at 1:5000. Lysates/proteins: 30 ug per lane. Blocking buffer: 5% non-fat dry milk in TBST. Detection: ECL Enhanced Kit. Exposure time: 120s.

实验步骤

访问官网浏览详情: www.ablybio.cn