

# IGF1 Rabbit mAb

货号: **AYM28999**

## 产品信息

反应	recombinant,protein
宿主	Rabbit
克隆性	Monoclonal
预测反应	
应用	WB
推荐浓度	<b>WB:</b> 1:500 - 1:2000
理论分子量	15kDa/17kDa/21kDa
实测分子量	10kDa
形式	Liquid
保存条件	Store at -20°C. Avoid freeze / thaw cycles. Buffer: PBS with 0.75% BSA,50% glycerol,pH7.3.
偶联物	Unconjugated
阳性对照	U-87MG,SKOV3,HeLa,Mouse liver,Mouse testis,Rat testis
细胞定位	Secreted
纯化	Affinity purification

## 抗原信息

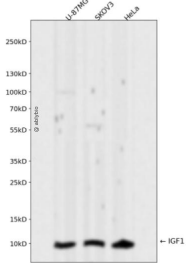
抗原信息	Recombinant fusion protein corresponding to recombinant IGF1.
序列	PETLCGAELVDALQFVCGDRGFYFNKPTGYGSSRRAPQTGIVDECCFRSCDLRRLEMYCAPLKPAKSARSVRAQRHTDM PKTQKEVHLKNASRGSGAGNKN

## 靶点信息

研究背景	The protein encoded by this gene is similar to insulin in function and structure and is a member of a family of proteins involved in mediating growth and development. The encoded protein is processed from a precursor, bound by a specific receptor, and secreted. Defects in this gene are a cause of insulin-like growth factor I deficiency. Alternative splicing results in multiple transcript variants encoding different isoforms that may undergo similar processing to generate mature protein.
基因ID	3479

基因名	IGF1
Swiss	P05019
别名	IGF1;IGF-I;IGFI;MGF

## 产品验证



Western blot analysis of IGF1 expressed in U-87MG,SKOV3,HeLa using IGF1 Rabbit mAb at 1:1000. Secondary antibody: HRP Goat Anti-Rabbit IgG (H+L) at 1:5000. Lysates/proteins: 30ug per lane. Blocking buffer: 5% non-fat dry milk in TBST. Detection: ECL Enhanced Kit. Exposure time: 120s.

## 实验步骤

访问官网浏览详情: [www.ablybio.cn](http://www.ablybio.cn)