

IGFBP2 Rabbit mAb

货号: **AYM28994**

产品信息

| | |
|-------|---|
| 反应 | Human |
| 宿主 | Rabbit |
| 克隆性 | Monoclonal |
| 预测反应 | |
| 应用 | WB IHC |
| 推荐浓度 | WB: 1:500 - 1:2000 IHC: 1:50 - 1:200 |
| 理论分子量 | 35kDa |
| 实测分子量 | 35kDa |
| 形式 | Liquid |
| 保存条件 | Store at -20°C. Avoid freeze / thaw cycles. Buffer: PBS with 0.75% BSA, 50% glycerol, pH7.3. |
| 偶联物 | Unconjugated |
| 阳性对照 | HepG2, PC-3 |
| 细胞定位 | apical plasma membrane, cytoplasmic vesicle, extracellular exosome, extracellular region, extracellular space |
| 纯化 | Affinity purification |

抗原信息

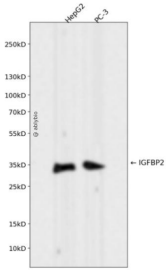
| | |
|------|--|
| 抗原信息 | Recombinant fusion protein corresponding to Human IGFBP2. |
| 序列 | PCQQELDQVLERISTMRLPDERGPLEHLYSLHIPNCDKHGLYNLKQCKMSLNGQRGECWCVNPNTGKLIQGAPTIRGDPE CHLFYNEQQEARGVHTQRMQ |

靶点信息

| | |
|------|--|
| 研究背景 | The protein encoded by this gene is one of six similar proteins that bind insulin-like growth factors I and II (IGF-I and IGF-II). The encoded protein can be secreted into the bloodstream, where it binds IGF-I and IGF-II with high affinity, or it can remain intracellular, interacting with many different ligands. High expression levels of this protein promote the growth of several types of tumors and may be predictive of the chances of recovery of the patient. Several transcript variants, one encoding a secreted isoform and the others encoding nonsecreted isoforms, have been found for this gene. [provided by RefSeq, Sep 2015] |
|------|--|

| | |
|-------|----------------|
| 基因ID | 3485 |
| 基因名 | IGFBP2 |
| Swiss | P18065 |
| 别名 | IBP2; IGF-BP53 |

产品验证



Western blot analysis of IGFBP2 expressed in HepG2,PC-3 using IGFBP2 Rabbit mAb at 1:1000. Secondary antibody: HRP Goat Anti-Rabbit IgG (H+L) at 1:5000. Lysates/proteins: 30ug per lane. Blocking buffer: 5% non-fat dry milk in TBST. Detection: ECL Enhanced Kit. Exposure time: 120s.

实验步骤

访问官网浏览详情: www.ablybio.cn