

Human IgG4 Rabbit mAb

货号: **AYM28990**

产品信息

反应	Human
宿主	Rabbit
克隆性	Monoclonal
预测反应	
应用	WB IHC
推荐浓度	WB: 1:500 - 1:2000 IHC: 1:50 - 1:200
理论分子量	36kDa
实测分子量	36kDa
形式	Liquid
保存条件	Store at -20°C. Avoid freeze / thaw cycles. Buffer: PBS with 0.75% BSA,50% glycerol,pH7.3.
偶联物	Unconjugated
阳性对照	Human plasma,HeLa(Negative control)
细胞定位	
纯化	Affinity purification

抗原信息

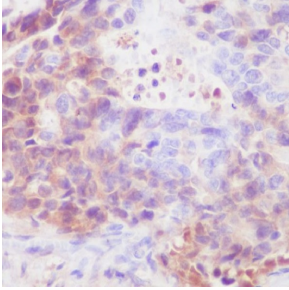
抗原信息	Recombinant fusion protein corresponding to Human Human IgG4.
序列	

靶点信息

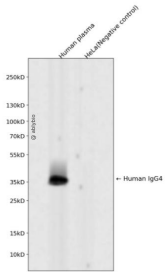
研究背景	<p>As a monomeric immunoglobulin that is predominately involved in the secondary antibody response and the only isotype that can pass through the human placenta, Immunoglobulin G (IgG) is synthesized and secreted by plasma B cells, and constitutes 75% of serum immunoglobulins in humans. IgG antibodies protect the body against the pathogens by agglutination and immobilization, complement activation, toxin neutralization, as well as the antibody-dependent cell-mediated cytotoxicity (ADCC). IgG tetramer contains two heavy chains (50 kDa) and two light chains (25 kDa) linked by disulfide bonds, that is the two identical halves form the Y-like shape. IgG is digested by pepsin proteolysis into Fab fragment (antigen-binding fragment) and Fc fragment ("crystallizable" fragment).</p>
------	--

基因ID	
基因名	
Swiss	P01861
别名	IGHG4, Ig gamma-4 chain C region

产品验证



Immunohistochemical analysis of paraffin-embedded human stomach carcinoma, using human IgG4 Antibody .



Western blot analysis of Human IgG4 expressed in Human plasma, HeLa (Negative control) using Human IgG4 Rabbit mAb at 1:1000. Secondary antibody: HRP Goat Anti-Rabbit IgG (H+L) at 1:5000. Lysates/proteins: 30ug per lane. Blocking buffer: 5% non-fat dry milk in TBST. Detection: ECL Enhanced Kit. Exposure time: 120s.

实验步骤

访问官网浏览详情: www.ablybio.cn