

PPM1E Rabbit mAb

货号: **AYM28981**

产品信息

反应	Human
宿主	Rabbit
克隆性	Monoclonal
预测反应	
应用	WB FC
推荐浓度	WB: 1:500 - 1:2000 FC: 1:20 - 1:50
理论分子量	90kDa
实测分子量	90kDa
形式	Liquid
保存条件	Store at -20°C. Avoid freeze / thaw cycles. Buffer: PBS with 0.75% BSA, 50% glycerol, pH7.3.
偶联物	Unconjugated
阳性对照	293T, SH-SY5Y
细胞定位	mitochondrion, nucleolus, nucleoplasm, nucleus
纯化	Affinity purification

抗原信息

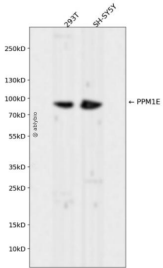
抗原信息	Recombinant fusion protein corresponding to Human PPM1E.
序列	ESDWTENSFQGGQEDGGDDKENHGECKRPWPQHQC SAPADLGYDGRVDSFTDR TSLSPGSQINVLDPGYLDTQIE ASKPHSAQFLLPVEMFGPGAPKKA

靶点信息

研究背景	This gene encodes a member of the PPM family of serine/threonine-protein phosphatases. The encoded protein is localized to the nucleus and dephosphorylates and inactivates multiple substrates including serine/threonine-protein kinase PAK 1, 5'-AMP-activated protein kinase (AMPK) and the multifunctional calcium/calmodulin-dependent protein kinases. Alternatively spliced transcript variants have been observed for this gene. [provided by RefSeq, May 2012]
基因ID	22843

基因名	PPM1E
Swiss	Q8WY54
别名	

产品验证



Western blot analysis of PPM1E expressed in 293T,SH-SY5Y using PPM1E Rabbit mAb at 1:1000. Secondary antibody: HRP Goat Anti-Rabbit IgG (H+L) at 1:5000. Lysates/proteins: 30ug per lane. Blocking buffer: 5 % non-fat dry milk in TBST. Detection: ECL Enhanced Kit. Exposure time: 120s.

实验步骤

访问官网浏览详情: www.ablybio.cn