

ATOH1 Rabbit mAb

货号: **AYM28966**

产品信息

反应	Human,Mouse,Rat
宿主	Rabbit
克隆性	Monoclonal
预测反应	
应用	WB
推荐浓度	WB: 1:500 - 1:2000
理论分子量	38kDa
实测分子量	38kDa
形式	Liquid
保存条件	Store at -20°C. Avoid freeze / thaw cycles. Buffer: PBS with 0.75% BSA,50% glycerol,pH7.3.
偶联物	Unconjugated
阳性对照	HeLa,HCT116,A-549
细胞定位	Nucleus
纯化	Affinity purification

抗原信息

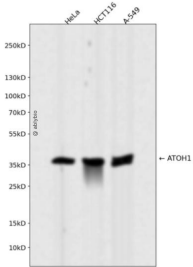
抗原信息	Recombinant fusion protein corresponding to Human ATOH1.
序列	MSRLLHAEEWAEVKELGDHHRQPQPHHLPQPPPPQPPATLQAREHPVYPPELSDSTDPRAWLAPTQGICTARAAQYL LHSPELGASEAAAAPRDEVD

靶点信息

研究背景	This protein belongs to the basic helix-loop-helix (BHLH) family of transcription factors. It activates E-box dependent transcription along with E47. [provided by RefSeq, Jul 2008]
基因ID	474
基因名	ATOH1

Swiss	Q92858
别名	ATH1; HATH1; MATH-1; bHLHa14

产品验证



Western blot analysis of ATOH1 expressed in HeLa, HCT116, A-549 using ATOH1 Rabbit mAb at 1:1000. Secondary antibody: HRP Goat Anti-Rabbit IgG (H+L) at 1:5000. Lysates/proteins: 30ug per lane. Blocking buffer: 5% non-fat dry milk in TBST. Detection: ECL Enhanced Kit. Exposure time: 120s.

实验步骤

访问官网浏览详情: www.ablybio.cn