

# Prolactin Rabbit mAb

货号: **AYM28961**

## 产品信息

|       |   |
|-------|---|
| 反应    | Human   |
| 宿主    | Rabbit  |
| 克隆性   | Monoclonal  |
| 预测反应  |   |
| 应用    | WB  |
| 推荐浓度  | <b>WB:</b> 1:500 - 1:2000   |
| 理论分子量 | 25kDa   |
| 实测分子量 | 23kDa   |
| 形式    | Liquid  |
| 保存条件  | Store at -20°C. Avoid freeze / thaw cycles.<br>Buffer: PBS with 0.75% BSA,50% glycerol,pH7.3. |
| 偶联物   | Unconjugated  |
| 阳性对照  | Mouse brain,Rat brain   |
| 细胞定位  | Secreted  |
| 纯化    | Affinity purification   |

## 抗原信息

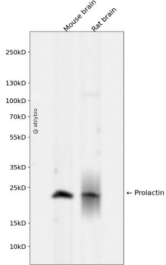
|      |  |
|------|--|
| 抗原信息 | Recombinant fusion protein corresponding to Human Prolactin.   |
| 序列   | LPICPGGAARCQVTLRDLFDRAVVLSHYIHNLSEMFSEFDKRYTHGRGFITKAINSCHTSSLATPEDKEQAQQMNQKDFL<br>SLIVSILRSWNEPLYHLVTEVRGMQEAPAILSKAVEIEEQTKRLLEGMELIVSQVHPETKENEIYPVWSGLPSLQMADEESRL<br>SAYYNLLHCLRRDASHKIDNYLKLLKCRIIHNNNC |

## 靶点信息

|      |  |
|------|--|
| 研究背景 | This gene encodes the anterior pituitary hormone prolactin. This secreted hormone is a growth regulator for many tissues, including cells of the immune system. It may also play a role in cell survival by suppressing apoptosis, and it is essential for lactation. Alternative splicing results in multiple transcript variants that encode the same protein. |
| 基因ID | 5617   |

|       |                    |
|-------|--------------------|
| 基因名   | PRL                |
| Swiss | P01236             |
| 别名    | PRL;GHA1;prolactin |

## 产品验证



Western blot analysis of Prolactin expressed in Mouse brain,Rat brain using Prolactin Rabbit mAb at 1:1000. Secondary antibody: HRP Goat Anti-Rabbit IgG (H+L) at 1:5000. Lysates/proteins: 30ug per lane. Blocking buffer: 5% non-fat dry milk in TBST. Detection: ECL Enhanced Kit. Exposure time: 120s.

## 实验步骤

访问官网浏览详情: [www.ablybio.cn](http://www.ablybio.cn)