

GLUT3 Rabbit mAb

货号: **AYM28952**

产品信息

| | |
|-------|-----------------------------------------------------------------------------------------------|
| 反应 | Human,Mouse,Rat |
| 宿主 | Rabbit |
| 克隆性 | Monoclonal |
| 预测反应 | |
| 应用 | WB |
| 推荐浓度 | WB: 1:500 - 1:2000 |
| 理论分子量 | 53kDa |
| 实测分子量 | 54kDa |
| 形式 | Liquid |
| 保存条件 | Store at -20°C. Avoid freeze / thaw cycles. Buffer: PBS with 0.75% BSA,50% glycerol,pH7.3. |
| 偶联物 | Unconjugated |
| 阳性对照 | HepG2 |
| 细胞定位 | Cell membrane,Multi-pass membrane protein |
| 纯化 | Affinity purification |

抗原信息

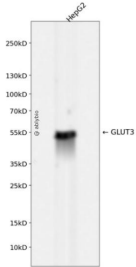
| | |
|------|-----------------------------------------------------------------------------|
| 抗原信息 | Recombinant fusion protein corresponding to Human GLUT3. |
| 序列 | ESPRFLLINRKEEENAKQILQRLWGTQDVSQDIQEMKDESARMSQEKQVTVLELFRVSSYRQPIIISIVLQLSQQ |

靶点信息

| | |
|------|------------------------------------------------------------------------------------------------------------------------------------------------------------------------------------------------------------------------------------------------------------------------------------------------|
| 研究背景 | Facilitative glucose transporter that can also mediate the uptake of various other monosaccharides across the cell membrane. Mediates the uptake of glucose, 2-deoxyglucose, galactose, mannose, xylose and fructose, and probably also dehydroascorbate. Does not mediate fructose transport. |
| 基因ID | 6515 |
| 基因名 | SLC2A3 |

| | |
|-------|--------------|
| Swiss | P11169 |
| 别名 | SLC2A3;GLUT3 |

产品验证



Western blot analysis of GLUT3 expressed in HepG2 using GLUT3 Rabbit mAb at 1:1000. Secondary antibody: HRP Goat Anti-Rabbit IgG (H+L) at 1:5000. Lysates/proteins: 30ug per lane. Blocking buffer: 5% non-fat dry milk in TBST. Detection: ECL Enhanced Kit. Exposure time: 120s.

实验步骤

访问官网浏览详情: www.ablybio.cn