

NAP1L1 Rabbit mAb

货号: **AYM28951**

产品信息

反应	Human,Mouse,Rat
宿主	Rabbit
克隆性	Monoclonal
预测反应	
应用	WB FC
推荐浓度	WB: 1:500 - 1:2000 FC: 1:20 - 1:50
理论分子量	37kDa/42kDa/45kDa
实测分子量	52,60kDa
形式	Liquid
保存条件	Store at -20°C. Avoid freeze / thaw cycles. Buffer: PBS with 0.75% BSA,50% glycerol,pH7.3.
偶联物	Unconjugated
阳性对照	HT-29,SKOV3,U-251MG,NIH/3T3,Mouse spleen,Mouse kidney
细胞定位	Melanosome,Nucleus
纯化	Affinity purification

抗原信息

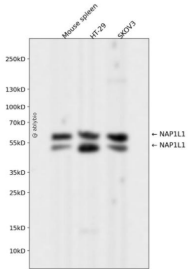
抗原信息	Recombinant fusion protein corresponding to Human NAP1L1.
序列	FFAPPEVPESGDLDDDAEAILAADFEIGHFLRERIIPRSVLYFTGEAIEDDDDDYDEEGEEADEEGEEEGDEENDPDYDPKK DQNPAECKQQ

靶点信息

研究背景	This gene encodes a member of the nucleosome assembly protein (NAP) family. This protein participates in DNA replication and may play a role in modulating chromatin formation and contribute to the regulation of cell proliferation. Alternative splicing results in multiple transcript variants encoding different isoforms; however, not all have been fully described.
基因ID	4673

基因名	NAP1L1
Swiss	P55209
别名	NAP1L1;NAP1;NAP1L;NRP

产品验证



Western blot analysis of NAP1L1 expressed in Mouse spleen,HT-29,SKOV3 using NAP1L1 Rabbit mAb at 1:1000. Secondary antibody: HRP Goat Anti-Rabbit IgG (H+L) at 1:5000. Lysates/proteins: 30ug per lane. Blocking buffer: 5% non-fat dry milk in TBST. Detection: ECL Enhanced Kit. Exposure time: 120s.

实验步骤

访问官网浏览详情: www.ablybio.cn