

PEDF Rabbit mAb

货号: **AYM28950**

产品信息

反应	Human
宿主	Rabbit
克隆性	Monoclonal
预测反应	
应用	WB FC
推荐浓度	WB: 1:500 - 1:2000 FC: 1:20 - 1:50
理论分子量	46kDa
实测分子量	46kDa
形式	Liquid
保存条件	Store at -20°C. Avoid freeze / thaw cycles. Buffer: PBS with 0.75% BSA,50% glycerol,pH7.3.
偶联物	Unconjugated
阳性对照	Human plasma,Mouse liver,Rat liver
细胞定位	Melanosome,Secreted
纯化	Affinity purification

抗原信息

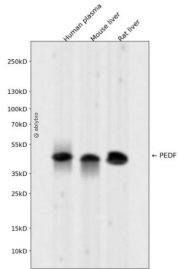
抗原信息	Recombinant fusion protein corresponding to Human PEDF.
序列	PDEISILLLGVAHFQWVTKFDSRKTSLDFYLDEERTVRVPMMSDPKAVLRYGLDSDLCKIAQLPLTGSMSSIIFFLPLKV TQNLTLIEESLTSEFIHD

靶点信息

研究背景	The protein encoded by this gene is a member of the serpin family, although it does not display the serine protease inhibitory activity shown by many of the other serpin family members. The encoded protein is secreted and strongly inhibits angiogenesis. In addition, this protein is a neurotrophic factor involved in neuronal differentiation in retinoblastoma cells.
基因ID	5176

基因名	SERPINF1
Swiss	P36955
别名	SERPINF1;EPC-1;OI12;OI6;PEDF;PIG35

产品验证



Western blot analysis of PEDF expressed in Human plasma, Mouse liver, Rat liver using PEDF Rabbit mAb at 1:1000. Secondary antibody: HRP Goat Anti-Rabbit IgG (H+L) at 1:5000. Lysates/proteins: 30ug per lane. Blocking buffer: 5% non-fat dry milk in TBST. Detection: ECL Enhanced Kit. Exposure time: 120s.

实验步骤

访问官网浏览详情: www.ablybio.cn