

# ARRB1 Rabbit mAb

货号: **AYM28949**

## 产品信息

反应	Human,Mouse,Rat
宿主	Rabbit
克隆性	Monoclonal
预测反应	
应用	<a href="#">WB</a> <a href="#">IHC</a> <a href="#">IF/ICC</a> <a href="#">FC</a>
推荐浓度	<b>WB:</b> 1:500 - 1:2000 <b>IHC:</b> 1:50 - 1:200 <b>IF/ICC:</b> 1:50 - 1:200 <b>FC:</b> 1:20 - 1:50
理论分子量	46kDa/47kDa
实测分子量	50kDa
形式	Liquid
保存条件	Store at -20°C. Avoid freeze / thaw cycles. Buffer: PBS with 0.75% BSA,50% glycerol,pH7.3.
偶联物	Unconjugated
阳性对照	K-562,A-549,Mouse lung,Rat lung,Rat brain
细胞定位	Cell membrane,Cell projection,Cytoplasm,Cytoplasmic vesicle,Membrane,Nucleus,clathrin-coated pit,pseudopodium
纯化	Affinity purification

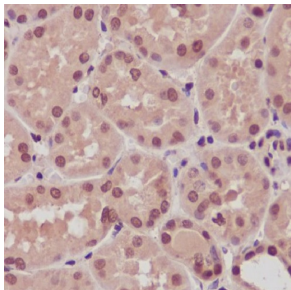
## 抗原信息

抗原信息	Recombinant fusion protein corresponding to Human ARRB1.
序列	RKVQYAPERPGPQPTAETTRQFLMSDKPLHLEASLDKEIYYHGEPISVNVHVTNNTNKTVKKIKISVRQYADICLFNTAQYKCPVAMEEADDTVPASSTFCKVYTLTPFLANNREKRLALDGLKHEDTNLASSTLLREGANREILGIIVSYKVKVCLVVSRRGGLLGLDASSDVAVELPFTLMHPKPKKEPPHREVPENETPVDTNLIELDTNDDDDIVFEDFARQLKGMKDDKEEEEDGTGSPQLNNR

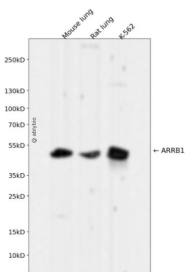
## 靶点信息

研究背景	Members of arrestin/beta-arrestin protein family are thought to participate in agonist-mediated desensitization of G-protein-coupled receptors and cause specific dampening of cellular responses to stimuli such as hormones, neurotransmitters, or sensory signals. Arrestin beta 1 is a cytosolic protein and acts as a cofactor in the beta-adrenergic receptor kinase (BARK) mediated desensitization of beta-adrenergic receptors. Besides the central nervous system, it is expressed at high levels in peripheral blood leukocytes, and thus the BARK/beta-arrestin system is believed to play a major role in regulating receptor-mediated immune functions. Alternatively spliced transcripts encoding different isoforms of arrestin beta 1 have been described.
基因ID	408
基因名	ARRB1
Swiss	P49407
别名	ARRB1;ARB1;ARR1

## 产品验证



Immunohistochemical analysis of paraffin-embedded human kidney, using ARRB1 Antibody.



Western blot analysis of ARRB1 expressed in Mouse lung, Rat lung, K-562 using ARRB1 Rabbit mAb at 1:1000. Secondary antibody: HRP Goat Anti-Rabbit IgG (H+L) at 1:5000. Lysates/proteins: 30ug per lane. Blocking buffer: 5% non-fat dry milk in TBST. Detection: ECL Enhanced Kit. Exposure time: 120s.

## 实验步骤

访问官网浏览详情: [www.ablybio.cn](http://www.ablybio.cn)