

ATPB Rabbit mAb

货号: **AYM28943**

产品信息

反应	Human,Mouse,Rat
宿主	Rabbit
克隆性	Monoclonal
预测反应	
应用	WB IHC IF/ICC IP
推荐浓度	WB: 1:500 - 1:2000 IHC: 1:50 - 1:200 IF/ICC: 1:50 - 1:200 IP: 1:20 - 1:50
理论分子量	56kDa
实测分子量	50kDa
形式	Liquid
保存条件	Store at -20°C. Avoid freeze / thaw cycles. Buffer: PBS with 0.75% BSA,50% glycerol,pH7.3.
偶联物	Unconjugated
阳性对照	Jurkat,HeLa,RAW264.7,Rat heart
细胞定位	Mitochondrion,Mitochondrion inner membrane
纯化	Affinity purification

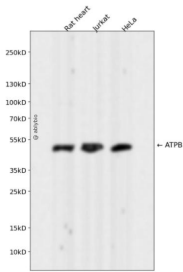
抗原信息

抗原信息	Recombinant fusion protein corresponding to Human ATPB.
序列	YSVFAGVGERTREGNDLYHEMIESGVINLKDATSKVALVYGMNEPPGARARVALTGLTVAEYFRDQEGQDVLLFIDNIFR FTQAGSEVSALLGRIPSAVGYQPTLATDMGTMQERITTTKKSITSVQAIYVPADDLTDPAATTFAHLDATTVLSRAIAELG IYPAVDPLDSTSRIMDPNIVGSEHYDVARGVQKILQDYKSLQDIIAILGMDELSEEDKLTVSRARKIQRFLSQPFQVAEVFTG HMGKLVPLKETIKGFQQLAGEYDHLPEQAFYMGPIEEAVAKADKLAEEHSS

靶点信息

研究背景	This gene encodes a subunit of mitochondrial ATP synthase. Mitochondrial ATP synthase catalyzes ATP synthesis, utilizing an electrochemical gradient of protons across the inner membrane during oxidative phosphorylation. ATP synthase is composed of two linked multi-subunit complexes: the soluble catalytic core, F1, and the membrane-spanning component, Fo, comprising the proton channel. The catalytic portion of mitochondrial ATP synthase consists of 5 different subunits (alpha, beta, gamma, delta, and epsilon) assembled with a stoichiometry of 3 alpha, 3 beta, and a single representative of the other 3. The proton channel consists of three main subunits (a, b, c). This gene encodes the beta subunit of the catalytic core.
基因ID	506
基因名	ATP5B
Swiss	P06576
别名	ATP5B;ATPMB;ATPSB;HEL-S-271

产品验证



Western blot analysis of ATPB expressed in Rat heart, Jurkat, HeLa using ATPB Rabbit mAb at 1:1000. Secondary antibody: HRP Goat Anti-Rabbit IgG (H+L) at 1:5000. Lysates/proteins: 30ug per lane. Blocking buffer: 5% non-fat dry milk in TBST. Detection: ECL Enhanced Kit. Exposure time: 120s.

实验步骤

访问官网浏览详情: www.ablybio.cn