

# CCL19 Rabbit mAb

货号: **AYM28935**

## 产品信息

反应	Human
宿主	Rabbit
克隆性	Monoclonal
预测反应	
应用	WB FC
推荐浓度	<b>WB:</b> 1:500 - 1:2000 <b>FC:</b> 1:20 - 1:50
理论分子量	10kDa
实测分子量	11kDa
形式	Liquid
保存条件	Store at -20°C. Avoid freeze / thaw cycles. Buffer: PBS with 0.75% BSA,50% glycerol,pH7.3.
偶联物	Unconjugated
阳性对照	Rat lung
细胞定位	extracellular region,extracellular space
纯化	Affinity purification

## 抗原信息

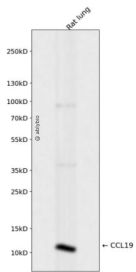
抗原信息	Recombinant fusion protein corresponding to Human CCL19.
序列	GTNDAEDCCLSVTQKPIPGYIVRNFHYLLIKDGCRVPAVVF <del>TTLRGRQLCAPPDQPWVERIIQRLQRTSAKMKR</del>

## 靶点信息

研究背景	This antimicrobial gene is one of several CC cytokine genes clustered on the p-arm of chromosome 9. Cytokines are a family of secreted proteins involved in immunoregulatory and inflammatory processes. The CC cytokines are proteins characterized by two adjacent cysteines. The cytokine encoded by this gene may play a role in normal lymphocyte recirculation and homing. It also plays an important role in trafficking of T cells in thymus, and in T cell and B cell migration to secondary lymphoid organs. It specifically binds to chemokine receptor CCR7.
基因ID	6363

基因名	CCL19
Swiss	Q99731
别名	CCL19;CKb11;ELC;MIP-3b;MIP3B;SCYA19

## 产品验证



Western blot analysis of CCL19 expressed in Rat lung using CCL19 Rabbit mAb at 1:1000. Secondary antibody: HRP Goat Anti-Rabbit IgG (H+L) at 1:5000. Lysates/proteins: 30ug per lane. Blocking buffer: 5% non-fat dry milk in TBST. Detection: ECL Enhanced Kit. Exposure time: 120s.

## 实验步骤

访问官网浏览详情: [www.ablybio.cn](http://www.ablybio.cn)