

# IL1 beta Rabbit mAb

货号: **AYM28932**

## 产品信息

反应	Human
宿主	Rabbit
克隆性	Monoclonal
预测反应	
应用	WB
推荐浓度	<b>WB:</b> 1:500 - 1:2000
理论分子量	31kDa
实测分子量	17kDa
形式	Liquid
保存条件	Store at -20°C. Avoid freeze / thaw cycles. Buffer: PBS with 0.75% BSA,50% glycerol,pH7.3.
偶联物	Unconjugated
阳性对照	Active Recombinant Human IL-1 beta Protein
细胞定位	Cytoplasm,Cytoplasmic vesicle,Lysosome,Secreted,autophagosome,cytosol,exosome
纯化	Affinity purification

## 抗原信息

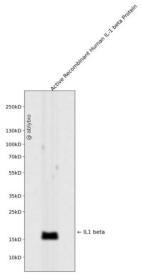
抗原信息	Recombinant fusion protein corresponding to Human IL1 beta.
序列	APVRSLNCTLRDSQQKSLVMSGPYELKALHLQGQDMEQQVVFMSFVQGEESNDKIPVALGLKEKNLYLSCVLKDDKPT LQLESVDPKKNYPKKKMEKRFVFNKIEINNKLEFESAQFPNWIYSTSQAENMPVFLGGTKGGQDITDFTMQFVSS

## 靶点信息

研究背景	The protein encoded by this gene is a member of the interleukin 1 cytokine family. This cytokine is produced by activated macrophages as a proprotein, which is proteolytically processed to its active form by caspase 1 (CASP1/ICE). This cytokine is an important mediator of the inflammatory response, and is involved in a variety of cellular activities, including cell proliferation, differentiation, and apoptosis. The induction of cyclooxygenase-2 (PTGS2/COX2) by this cytokine in the central nervous system (CNS) is found to contribute to inflammatory pain hypersensitivity. This gene and eight other interleukin 1 family genes form a cytokine gene cluster on chromosome 2.
------	---

基因ID	3553
基因名	IL1B
Swiss	P01584
别名	IL-1;IL1-BETA;IL1F2;IL1 beta;IL1B

## 产品验证



Western blot analysis of IL1 beta expressed in Active Recombinant Human IL-1 beta Protein using IL1 beta a Rabbit mAb at 1:1000. Secondary antibody: HRP Goat Anti-Rabbit IgG (H+L) at 1:5000. Lysates/proteins : 30ug per lane. Blocking buffer: 5% non-fat dry milk in TBST. Detection: ECL Enhanced Kit. Exposure time : 120s.

## 实验步骤

访问官网浏览详情: [www.ablybio.cn](http://www.ablybio.cn)