

WASF2 Rabbit mAb

货号: **AYM28921**

产品信息

反应	Human,Mouse,Rat
宿主	Rabbit
克隆性	Monoclonal
预测反应	
应用	WB IHC
推荐浓度	WB: 1:500 - 1:2000 IHC: 1:50 - 1:200
理论分子量	80kDa
实测分子量	80kDa
形式	Liquid
保存条件	Store at -20°C. Avoid freeze / thaw cycles. Buffer: PBS with 0.75% BSA,50% glycerol,pH7.3.
偶联物	Unconjugated
阳性对照	A-549,K-562,Mouse testis,Mouse thymus
细胞定位	actin cytoskeleton,basolateral plasma membrane,cell-cell junction,cytosol,early endosome,extracellular exosome,SCAR complex
纯化	Affinity purification

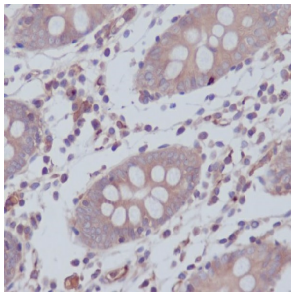
抗原信息

抗原信息	Recombinant fusion protein corresponding to Human WASF2.
序列	PPGPPPPFTGADGQPAIPPLSDTTKPKSSLPVSDARSDLLSAIRQGFQLRRVEEQREQEKRDVVGNDVATILSRRIAVE YDSEDDSSFEDEDDWSD

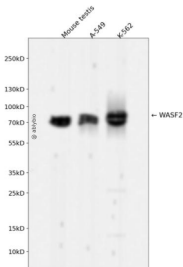
靶点信息

研究背景	This gene encodes a member of the Wiskott-Aldrich syndrome protein family. The gene product is a protein that forms a multiprotein complex that links receptor kinases and actin. Binding to actin occurs through a C-terminal verprolin homology domain in all family members. The multiprotein complex serves to transduce signals that involve changes in cell shape, motility or function. The published map location (PMID:10381382) has been changed based on recent genomic sequence comparisons, which indicate that the expressed gene is located on chromosome 1, and a pseudogene may be located on chromosome X. Two transcript variants encoding different isoforms have been found for this gene. [provided by RefSeq, Jan 2011]
基因ID	10163
基因名	WASF2
Swiss	Q9Y6W5
别名	IMD2; SCAR2; WASF4; WAVE2; dj393P12.2

产品验证



Immunohistochemical analysis of paraffin-embedded human colon, using WASF2 Antibody.



Western blot analysis of WASF2 expressed in Mouse testis, A-549, K-562 using WASF2 Rabbit mAb at 1:1000. Secondary antibody: HRP Goat Anti-Rabbit IgG (H+L) at 1:5000. Lysates/proteins: 30ug per lane. Blocking buffer: 5% non-fat dry milk in TBST. Detection: ECL Enhanced Kit. Exposure time: 120s.

实验步骤

访问官网浏览详情: www.ablybio.cn