

# GCET1 Rabbit mAb

货号: **AYM28916**

## 产品信息

反应	Human,Mouse,Rat
宿主	Rabbit
克隆性	Monoclonal
预测反应	
应用	WB
推荐浓度	<b>WB:</b> 1:500 - 1:2000
理论分子量	21kDa/32kDa/37kDa/46kDa/48kDa
实测分子量	47kDa
形式	Liquid
保存条件	Store at -20°C. Avoid freeze / thaw cycles. Buffer: PBS with 0.75% BSA,50% glycerol,pH7.3.
偶联物	Unconjugated
阳性对照	Human serum
细胞定位	Cytoplasm,Membrane,Secreted,Single-pass type II membrane protein
纯化	Affinity purification

## 抗原信息

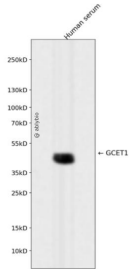
抗原信息	Recombinant fusion protein corresponding to Human GCET1.
序列	TQILQGLGFNLTHTPESAIHQGFQHLVHSLTVPSKDLTLKMGSAFVKKELQLQANFLGNVKRLYEAEVFSTDFSNPSIAQA RINSHVKKKTQGKVVDIQ

## 靶点信息

研究背景	Protease inhibitor that inhibits trypsin and trypsin-like serine proteases (in vitro. Inhibits plasmin and thrombin with lower efficiency (in vitro.
基因ID	327657
基因名	SERPINA9

<b>Swiss</b>	Q86WD7
别名	SERPINA9;GCET1;SERPINA11;SERPINA11b;serpin A9

## 产品验证



Western blot analysis of GCET1 expressed in Human serum using GCET1 Rabbit mAb at 1:1000. Secondary antibody: HRP Goat Anti-Rabbit IgG (H+L) at 1:5000. Lysates/proteins: 30ug per lane. Blocking buffer: 5 % non-fat dry milk in TBST. Detection: ECL Enhanced Kit. Exposure time: 120s.

## 实验步骤

访问官网浏览详情: [www.ablybio.cn](http://www.ablybio.cn)