

Lamin B Receptor Rabbit mAb

货号: **AYM28914**

产品信息

反应	Human,Rat
宿主	Rabbit
克隆性	Monoclonal
预测反应	
应用	WB IHC IF/ICC IP
推荐浓度	WB: 1:500 - 1:2000 IHC: 1:50 - 1:200 IF/ICC: 1:50 - 1:200 IP: 1:20 - 1:50
理论分子量	70kDa
实测分子量	70kDa
形式	Liquid
保存条件	Store at -20°C. Avoid freeze / thaw cycles. Buffer: PBS with 0.75% BSA,50% glycerol,pH7.3.
偶联物	Unconjugated
阳性对照	22Rv1,Mouse eye,Mouse spleen,Mouse lung
细胞定位	Multi-pass membrane protein,Nucleus inner membrane
纯化	Affinity purification

抗原信息

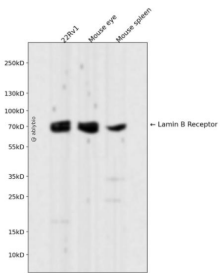
抗原信息	Recombinant fusion protein corresponding to Human Lamin B Receptor.
序列	MPSRKFADGEVVRGRWPGSSLYEVEILSHDSTSQLYTVKYKDGTELELKENDIKPLTSFRQRKGGSTSSSPSRRRGSRSR RSRSPGRPPKSARRSASASHQADIKEARREVEVKLTPILKPFNGNSISRYNGEPEHIERNDAPHKNTQEKFSLSQESSYIA TQYSLRPRREEVKLKEIDSKEEKYVAKELAVRTFEVTPIRAKDLEFGG

靶点信息

研究背景	The protein encoded by this gene belongs to the ERG4/ERG24 family. It localized in the nuclear envelope inner membrane and anchors the lamina and the heterochromatin to the membrane. It may mediate interaction between chromatin and lamin B. Mutations of this gene has been associated with autosomal recessive HEM/Greenberg skeletal dysplasia. Alternative splicing occurs at this locus and two transcript variant s encoding the same protein have been identified.
------	---

基因ID	3930
基因名	LBR
Swiss	Q14739
别名	LBR;DHCR14B;LMN2R;PHA;TDRD18

产品验证



Western blot analysis of Lamin B Receptor expressed in 22Rv1, Mouse eye, Mouse spleen using Lamin B Receptor Rabbit mAb at 1:1000. Secondary antibody: HRP Goat Anti-Rabbit IgG (H+L) at 1:5000. Lysates/proteins: 30ug per lane. Blocking buffer: 5% non-fat dry milk in TBST. Detection: ECL Enhanced Kit. Exposure time: 120s.

实验步骤

访问官网浏览详情: www.ablybio.cn