

Serum Amyloid A Rabbit mAb

货号: **AYM28908**

产品信息

反应	Human
宿主	Rabbit
克隆性	Monoclonal
预测反应	
应用	WB IHC
推荐浓度	WB: 1:500 - 1:2000 IHC: 1:50 - 1:200
理论分子量	13kDa
实测分子量	12kDa
形式	Liquid
保存条件	Store at -20°C. Avoid freeze / thaw cycles. Buffer: PBS with 0.75% BSA,50% glycerol,pH7.3.
偶联物	Unconjugated
阳性对照	Mouse liver,Rat liver
细胞定位	Secreted
纯化	Affinity purification

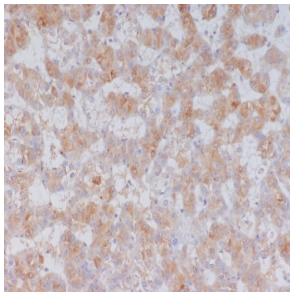
抗原信息

抗原信息	Recombinant fusion protein corresponding to Human Serum Amyloid A.
序列	MKLLTGLVFCSLVLGVSSRSFFSFLGEAFDGMWRAYSDMREANYIGSDKYFHARGNYDAAKRGPGGAWAAEVISD ARENIQRFFGHGAEDSLADQAA

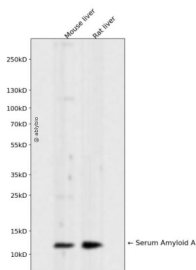
靶点信息

研究背景	This gene encodes a member of the serum amyloid A family of apolipoproteins. The encoded preproprotein is proteolytically processed to generate the mature protein. This protein is a major acute phase protein that is highly expressed in response to inflammation and tissue injury. This protein also plays an important role in HDL metabolism and cholesterol homeostasis. High levels of this protein are associated with chronic inflammatory diseases including atherosclerosis, rheumatoid arthritis, Alzheimer's disease and Crohn's disease. This protein may also be a potential biomarker for certain tumors. Alternate splicing results in multiple transcript variants that encode the same protein. A pseudogene of this gene is found on chromosome 11.
基因ID	6288
基因名	SAA1
Swiss	PODJ18
别名	SAA1;PIG4;SAA;SAA2;TP53I4

产品验证



Immunohistochemical analysis of paraffin-embedded human liver cancer, using Serum Amyloid A Antibody.



Western blot analysis of Serum Amyloid A expressed in Mouse liver, Rat liver using Serum Amyloid A Rabbit mAb at 1:1000. Secondary antibody: HRP Goat Anti-Rabbit IgG (H+L) at 1:5000. Lysates/proteins: 30ug per lane. Blocking buffer: 5% non-fat dry milk in TBST. Detection: ECL Enhanced Kit. Exposure time: 120s.

实验步骤

访问官网浏览详情: www.ablybio.cn