

SUMO4 Rabbit mAb

货号: **AYM28906**

产品信息

反应	Human,Mouse,Rat
宿主	Rabbit
克隆性	Monoclonal
预测反应	
应用	WB IF/ICC IP FC
推荐浓度	WB: 1:500 - 1:2000 IF/ICC: 1:50 - 1:200 IP: 1:20 - 1:50 FC: 1:20 - 1:50
理论分子量	10kDa
实测分子量	15kDa
形式	Liquid
保存条件	Store at -20°C. Avoid freeze / thaw cycles. Buffer: PBS with 0.75% BSA,50% glycerol,pH7.3.
偶联物	Unconjugated
阳性对照	HepG2,MCF7,Mouse kidney,Mouse spleen,Rat spleen
细胞定位	nucleus
纯化	Affinity purification

抗原信息

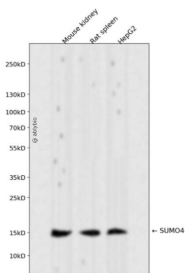
抗原信息	Recombinant fusion protein corresponding to Human SUMO4.
序列	MANEKPTTEEVKTENNHNHINLKVAGQDGSVVQFKIKRQTPLSKLMKAYCEPRGLSVKQIRFRFGGQPISGTDKPAQLEMED EDTIDVFQQPTGGVY

靶点信息

研究背景	This gene is a member of the SUMO gene family. This family of genes encode small ubiquitin-related modifiers that are attached to proteins and control the target proteins' subcellular localization, stability, or activity. The protein described in this record is located in the cytoplasm and specifically modifies IKBA, leading to negative regulation of NF-kappa-B-dependent transcription of the IL12B gene. A specific polymorphism in this SUMO gene, which leads to the M55V substitution, has been associated with type I diabetes. The RefSeq contains this polymorphism.
------	--

基因ID	387082
基因名	SUMO4
Swiss	Q6EEV6
别名	SUMO4;IDDM5;SMT3H4;SUMO-4;dj281H8.4

产品验证



Western blot analysis of SUMO4 expressed in Mouse kidney,Rat spleen,HepG2 using SUMO4 Rabbit mAb at 1:1000. Secondary antibody: HRP Goat Anti-Rabbit IgG (H+L) at 1:5000. Lysates/proteins: 30ug per lane. Blocking buffer: 5% non-fat dry milk in TBST. Detection: ECL Enhanced Kit. Exposure time: 120s.

实验步骤

访问官网浏览详情: www.ablybio.cn