

TCP1 alpha Rabbit mAb

货号: **AYM28905**

产品信息

反应	Human
宿主	Rabbit
克隆性	Monoclonal
预测反应	
应用	WB IHC IF/ICC IP
推荐浓度	WB: 1:500 - 1:2000 IHC: 1:50 - 1:200 IF/ICC: 1:50 - 1:200 IP: 1:20 - 1:50
理论分子量	60kDa
实测分子量	60kDa
形式	Liquid
保存条件	Store at -20°C. Avoid freeze / thaw cycles. Buffer: PBS with 0.75% BSA,50% glycerol,pH7.3.
偶联物	Unconjugated
阳性对照	293T,PC-3,HeLa,Jurkat
细胞定位	Cytoplasm,centrosome,cytoskeleton,microtubule organizing center
纯化	Affinity purification

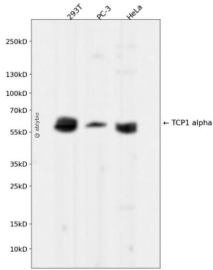
抗原信息

抗原信息	Recombinant fusion protein corresponding to Human TCP1 alpha.
序列	AVRRVLKRD LKRIAKASGATILSTLANLEGEETFEAAMLGQAEVVQERICDDELILIKNTKARTSASIILRGANDFCDEMER SLHDALCVVKRVLESKSVVPGGGAVEAALSILENYATSMGSREQLAIAEFARSLLVIPNTLAVNAAQDSTDVAKLRAFHN EAQVNPENKLNKWIWGLDLSNGKPRDNKQAGVFPEPTIVKVKSLKFATEAAITILRIDDLIKLHPESKDDKHGSYEDAVHSGAL ND

靶点信息

研究背景	The protein encoded by this gene is a molecular chaperone that is a member of the chaperonin containing TCP1 complex (CCT), also known as the TCP1 ring complex (TRiC). This complex consists of two identical stacked rings, each containing eight different proteins. Unfolded polypeptides enter the central cavity of the complex and are folded in an ATP-dependent manner. The complex folds various proteins, including actin and tubulin. Alternate transcriptional splice variants of this gene, encoding different isoforms, have been characterized. In addition, three pseudogenes that appear to be derived from this gene have been found.
基因ID	6950
基因名	TCP1
Swiss	P17987
别名	TCP1;CCT-alpha;CCT1;CCTa;D6S230E;TCP-1-alpha

产品验证



Western blot analysis of TCP1 alpha expressed in 293T, PC-3, HeLa using TCP1 alpha Rabbit mAb at 1:1000. Secondary antibody: HRP Goat Anti-Rabbit IgG (H+L) at 1:5000. Lysates/proteins: 30ug per lane. Blocking buffer: 5% non-fat dry milk in TBST. Detection: ECL Enhanced Kit. Exposure time: 120s.

实验步骤

访问官网浏览详情: www.ablybio.cn