

# RCC1 Rabbit mAb

货号: **AYM28904**

## 产品信息

反应	Human,Mouse,Rat
宿主	Rabbit
克隆性	Monoclonal
预测反应	
应用	WB IHC IF/ICC IP FC
推荐浓度	<b>WB:</b> 1:500 - 1:2000 <b>IHC:</b> 1:50 - 1:200 <b>IF/ICC:</b> 1:50 - 1:200 <b>IP:</b> 1:20 - 1:50 <b>FC:</b> 1:20 - 1:50
理论分子量	44kDa/48kDa
实测分子量	45kDa
形式	Liquid
保存条件	Store at -20°C. Avoid freeze / thaw cycles. Buffer: PBS with 0.75% BSA,50% glycerol,pH7.3.
偶联物	Unconjugated
阳性对照	U-87MG,MCF7,HeLa,SW620,LO2
细胞定位	Cytoplasm,Nucleus
纯化	Affinity purification

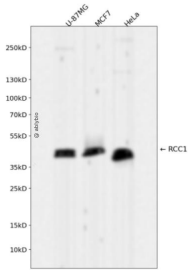
## 抗原信息

抗原信息	Recombinant fusion protein corresponding to Human RCC1.
序列	MSPKRIAKRRSPPADAIPKSKKVKVSHRSHSTEPGLVLTGQGQDVGQLGLGENVMERKKPALVSIPEDVVQAEAGGMHTV CLSKSGQVYSFGCNDEGALGRDTSVEGSEMVPKVELQEKVVQVSAGDSHTAALDDGRVFLWGSFRDNNGVIGLLEP MKKSMVPVQQLDVPVVKVASGNDHLVMLTADGDLYTLGCGEQQLGRVPELFANRGGRRQGLERLLLVPKCVMLKSRG SRGHV

## 靶点信息

研究背景	Guanine-nucleotide releasing factor that promotes the exchange of Ran-bound GDP by GTP, and thereby plays an important role in RAN-mediated functions in nuclear import and mitosis. Contributes to the generation of high levels of chromosome-associated, GTP-bound RAN, which is important for mitotic spindle assembly and normal progress through mitosis. Via its role in maintaining high levels of GTP-bound RAN in the nucleus, contributes to the release of cargo proteins from importins after nuclear import. Involved in the regulation of onset of chromosome condensation in the S phase. Binds both to the nucleosomes and double-stranded DNA.
基因ID	1104
基因名	RCC1
Swiss	P18754
别名	RCC1;CHC1;RCC1-I;SNHG3-RCC1

## 产品验证



Western blot analysis of RCC1 expressed in U-87MG, MCF7, HeLa using RCC1 Rabbit mAb at 1:1000. Secondary antibody: HRP Goat Anti-Rabbit IgG (H+L) at 1:5000. Lysates/proteins: 30ug per lane. Blocking buffer: 5% non-fat dry milk in TBST. Detection: ECL Enhanced Kit. Exposure time: 120s.

## 实验步骤

访问官网浏览详情: [www.ablybio.cn](http://www.ablybio.cn)