

PML Rabbit mAb

货号: **AYM28893**

产品信息

反应	Human,Mouse,Rat
宿主	Rabbit
克隆性	Monoclonal
预测反应	
应用	WB IHC IF/ICC IP FC
推荐浓度	WB: 1:500 - 1:2000 IHC: 1:50 - 1:200 IF/ICC: 1:50 - 1:200 IP: 1:20 - 1:50 FC: 1:20 - 1:50
理论分子量	47-48kDa/62-97kDa
实测分子量	48-120kDa
形式	Liquid
保存条件	Store at -20°C. Avoid freeze / thaw cycles. Buffer: PBS with 0.75% BSA,50% glycerol,pH7.3.
偶联物	Unconjugated
阳性对照	DU145
细胞定位	Cytoplasm,Cytoplasmic side,Early endosome membrane,Endoplasmic reticulum membrane,Nucleus,PML body,Peripheral membrane protein,nucleolus,nucleoplasm
纯化	Affinity purification

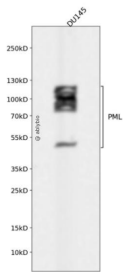
抗原信息

抗原信息	Recombinant fusion protein corresponding to Human PML.
序列	AVDARYQRDYEEMASRLGRLDAVLQIRITGSALVQRMKCYASDQEVLDMHGFLRQALCRLRQEEPQSLQAAVRTDGFDFKVRQLQLSSCITQGKDAAVSKKASPEAASTPRDPIDVDLVDVSNNTTTAQKRKCSQTQCPRKVIKMESEEGKEARLARSSPEQRPSTSKAVSPPHLDGPPSPRSPVIGSEVFLPNSNHVASGAGEAEERVVVSSSESDSAENSCMEPMETAEPQSSPAHSSPAHSSPAHSSPVQSLRAQGASSLPCGTYHPPAWPPHQPAAEQAATPDAEPHSEPPDHQER

靶点信息

研究背景	The protein encoded by this gene is a member of the tripartite motif (TRIM) family. The TRIM motif includes three zinc-binding domains, a RING, a B-box type 1 and a B-box type 2, and a coiled-coil region. This phosphoprotein localizes to nuclear bodies where it functions as a transcription factor and tumor suppressor. Its expression is cell-cycle related and it regulates the p53 response to oncogenic signals. The gene is often involved in the translocation with the retinoic acid receptor alpha gene associated with acute promyelocytic leukemia (APL). Extensive alternative splicing of this gene results in several variations of the protein's central and C-terminal regions; all variants encode the same N-terminus. Alternatively spliced transcript variants encoding different isoforms have been identified.
基因ID	5371
基因名	PML
Swiss	P29590
别名	MYL;PP8675;RNF71;TRIM19;PML

产品验证



Western blot analysis of PML expressed in DU145 using PML Rabbit mAb at 1:1000. Secondary antibody: HRP Goat Anti-Rabbit IgG (H+L) at 1:5000. Lysates/proteins: 30ug per lane. Blocking buffer: 5% non-fat dry milk in TBST. Detection: ECL Enhanced Kit. Exposure time: 120s.

实验步骤

访问官网浏览详情: www.ablybio.cn